
June 7, 2026

LVL COMMITTEE MEETING



UF-708 Graham Stormwater Improvements

KATE FARMER, UF PD+C PROJECT MANAGER

Project Overview

- The project has been presented twice previously to the LVL Committee.

February 5, 2026:

Provided a project overview with the removal of 947 trees and 221 exotic invasives. Of the 947 trees, 67 were heritage trees.

Motion: A request for more information on heritage trees in the new design, examples of similar projects, a management plan, and quantification of energy/water movement trade-offs.



Project Overview

- The project has been presented once previously to the LVL Committee.

March 5, 2026:

Presented additional information the committee requested on tree impacts and mitigation, comparable successful projects, and quantification of energy/water movement trade-offs.

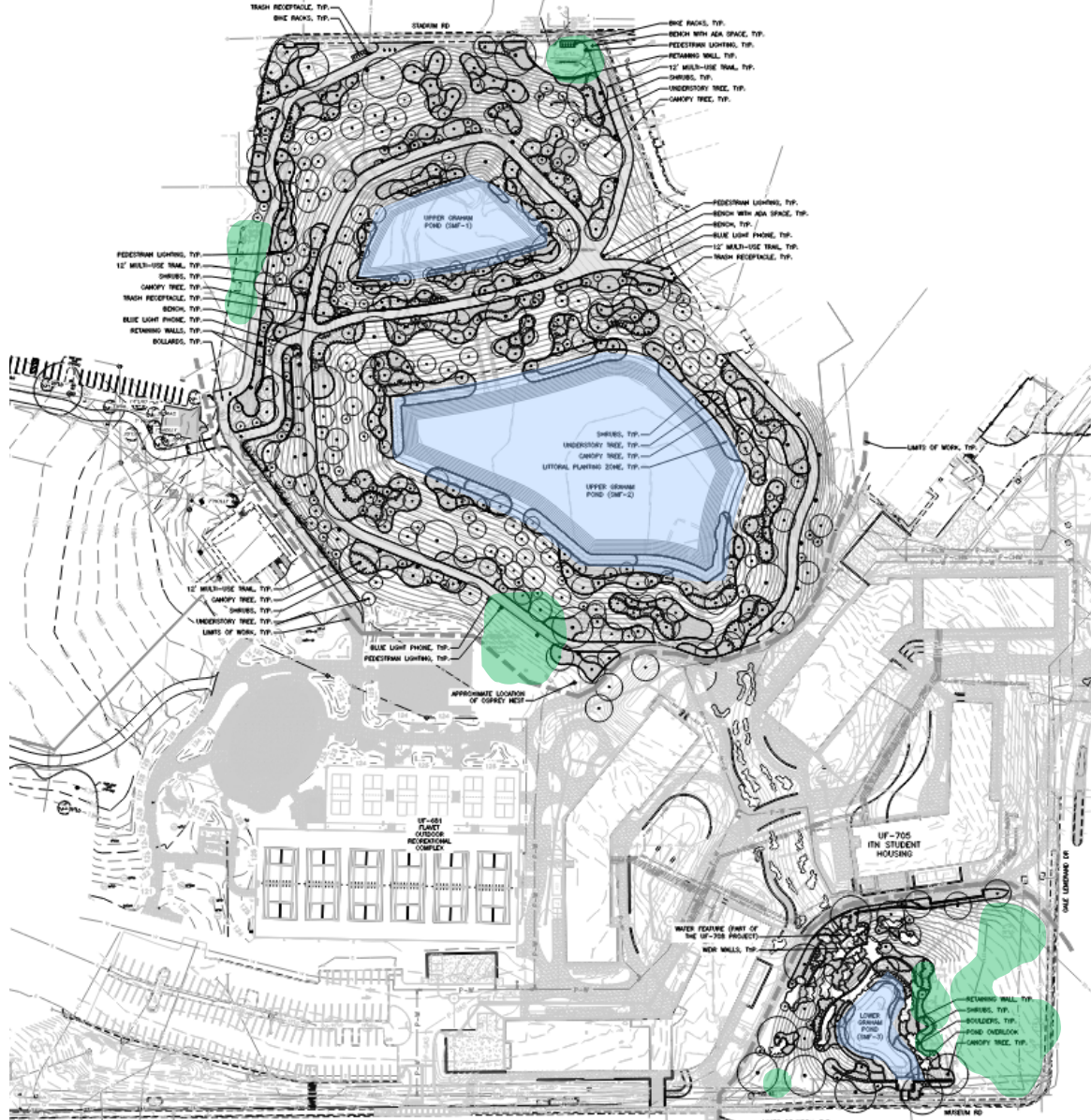
Motion: Forward the project to the VP for Construction, Facilities and Real Estate with a recommendation to approve as presented but requested that the project come back to the committee to review the items the committee would normally review for a major project.

A majority approved the motion.



60% Site Plan – Previously Presented

- Previously designed as 2 upper ponds with berm and walking path between



UF-708 Graham Stormwater Improvements

100% Site Plan –

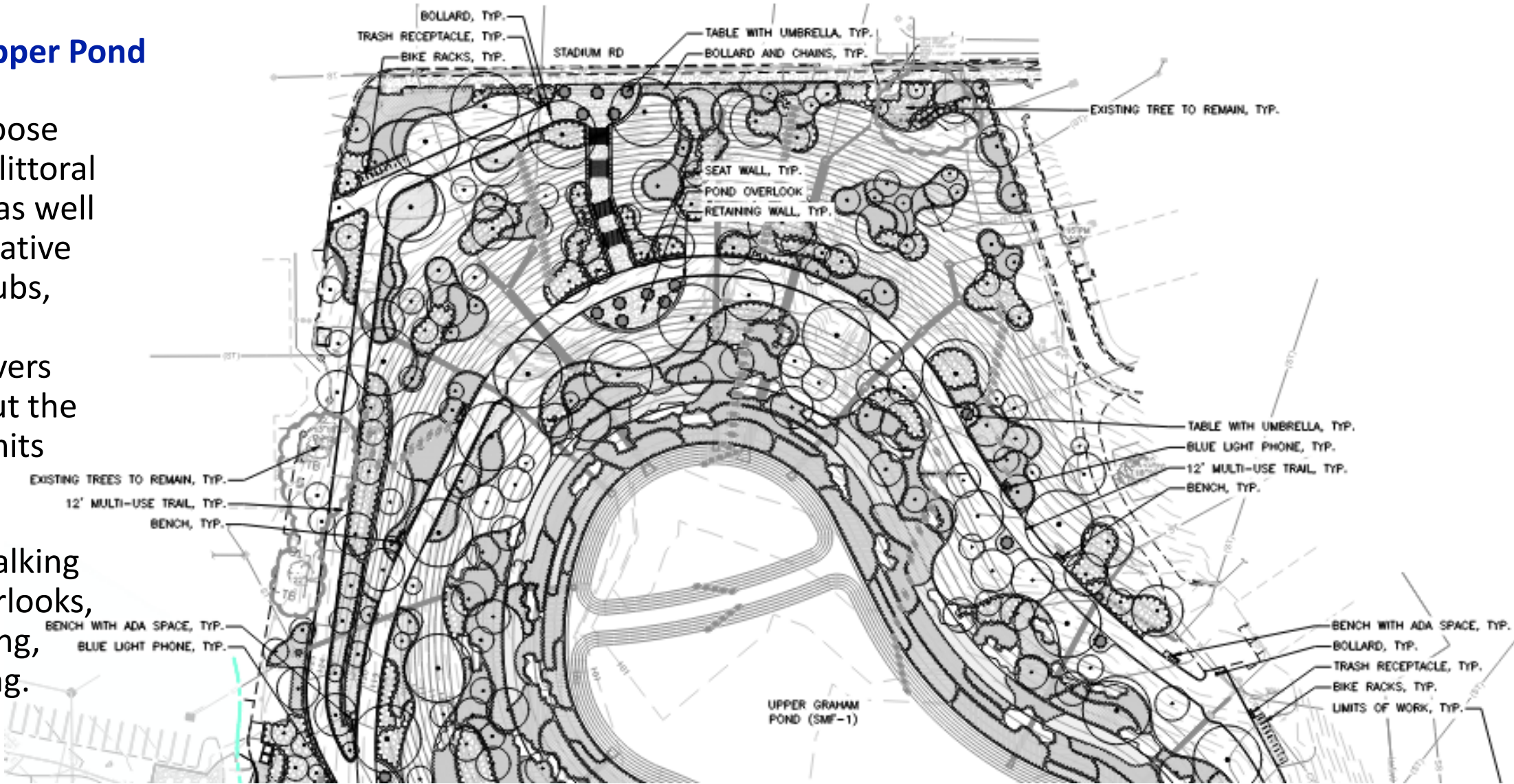
- Upper Ponds redesigned as single pond
- Redesign allowed a few more trees preserved on west side of upper pond
- Plan includes 6:1 slopes, reducing erosion risk, improving safety
- Pond will manage stormwater flow and improve water quality. Replacing damaged pipes and adding manholes will moderate flow velocity and minimize erosive forces.
- Eliminates hazardous terrain, adds safe pedestrian trails, and upgrades stormwater infrastructure to reduce sediment and nutrient transport downstream.





Site Plan – Upper Pond

- Plans propose extensive littoral plantings as well as other native trees, shrubs, and groundcovers throughout the project limits
- Plans also include walking trails, overlooks, bike parking, and seating.



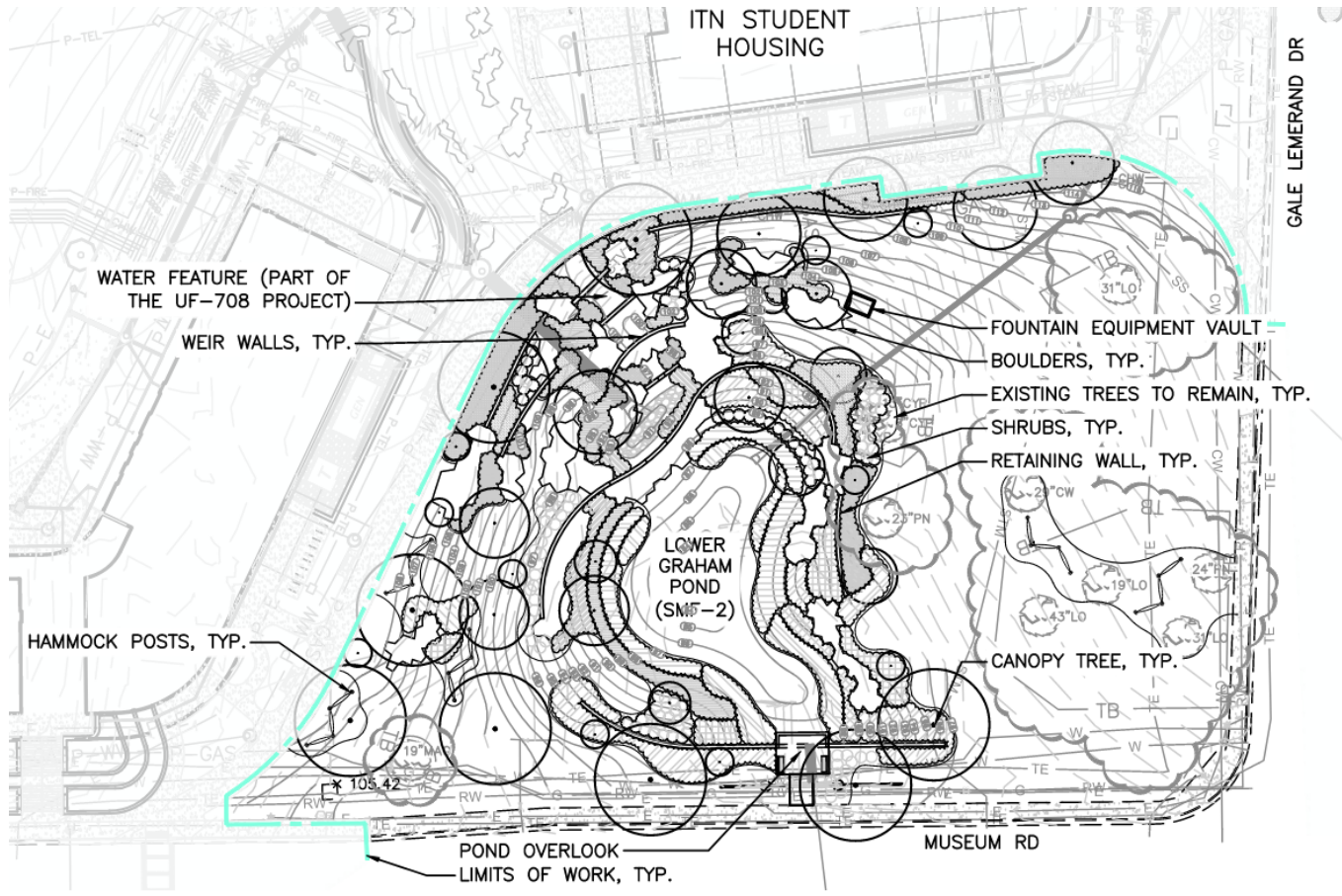
Site Plan – Upper Pond

- Plans propose extensive littoral plantings as well as other native trees, shrubs, and groundcovers throughout the project limits
- Plans also include walking trails, overlooks, bike parking, and seating.



Site Plan – Lower Pond

- Reshaping of pond is required to accommodate new stormwater pipe and repair/replace existing weir walls and concrete ditch bottom
- Improved overlook proposed at Museum Road



UF-708 Graham Stormwater Improvements

Tree Impacts

- Several heritage trees have been preserved around the project site



- 30" Cypress
- 31" Live Oak
- 43" Live Oak
- 31" Live Oak
- 24" Spruce Pine
- 24" Cottonwood

UF-708 Graham Stormwater Improvements

Landscape Plan

- The project is located in precinct 2
- The project is using all native plantings
- In order to increase diversity of proposed tree plantings, some trees are specified below 30 gallon size



Landscape Plan

PROPOSED TREES (333 total trees proposed)	
SCIENTIFIC NAME	COMMON NAME
AESCULUS PAVIA*	RED BUCKEYE
ACER RUBRUM `FLORIDA FLAME`	FLORIDA FLAME RED MAPLE
CARYA GLABRA*	PIGNUT HICKORY
CARPINUS CAROLINIANA*	AMERICAN HORNBEAM
CERCIS CANADENSIS*	EASTERN REDBUD
CHIONANTHUS VIRGINICUS*	WHITE FRINGETREE
FRAXINUS PENNSYLVANICA*	GREEN ASH
ILEX CASSINE	DAHOON HOLLY
ILEX GLABRA*	INKBERRY HOLLY
JUNIPERUS SILICICOLA	SOUTHERN RED CEDAR
MORUS RUBRA*	RED MULBERRY
MAGNOLIA VIRGINIANA	SWEET BAY
NYSSA SYLVATICA BIFLORA*	SWAMP TUPELO
PRUNUS ANGUSTIFOLIA*	CHICKASAW PLUM
PINUS ELLIOTTII	SLASH PINE
PINUS PALUSTRIS	LONGLEAF PINE
QUERCUS AUSTRINA**	BLUFF OAK
QUERCUS MICHAUXII	BASKET OAK
QUERCUS VIRGINIANA**	SEEDLING SOUTHERN LIVE OAK
TAXODIUM ASCENDENS*	POND CYPRESS
TAXODIUM DISTICHUM**	BALD CYPRESS
VACCINIUM ARBOREUM*	FARKLEBERRY
VIBURNUM OBOVATUM*	WALTER'S VIBURNUM

*Specified below 30 gallon size.
 **Specified above 30 gallon size



Landscape Plan – Upper Pond

PROPOSED TREES (333 total trees proposed)

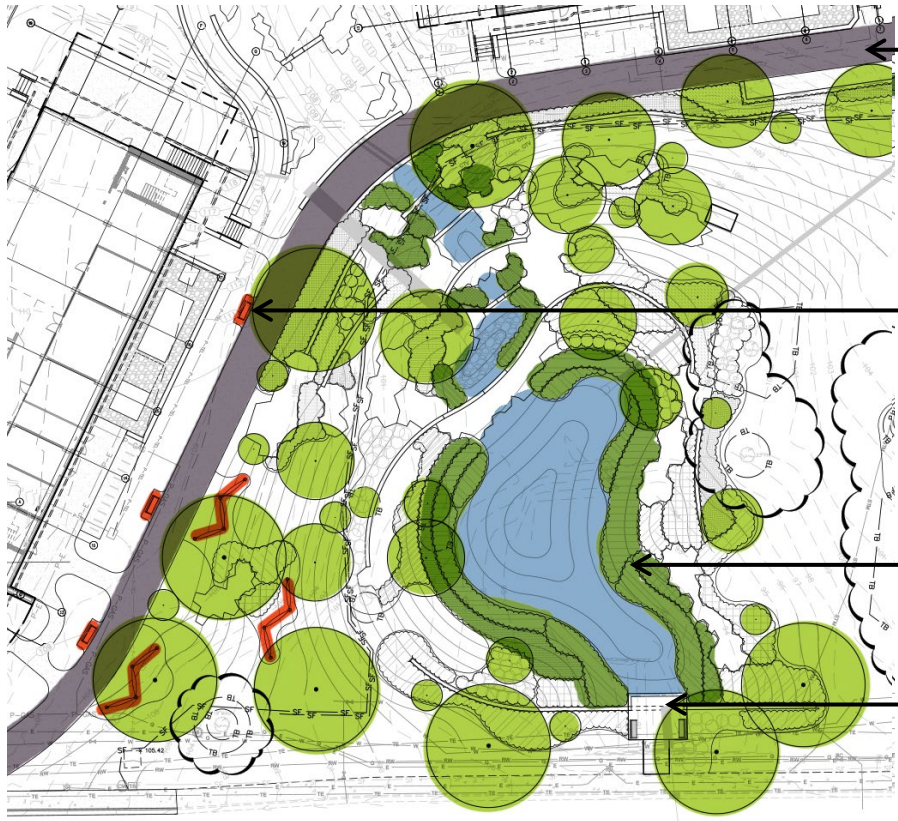
SCIENTIFIC NAME	COMMON NAME
AESCLUSUS PAVIA*	RED BUCKEYE
ACER RUBRUM `FLORIDA FLAME`	FLORIDA FLAME RED MAPLE
CARYA GLABRA*	PIGNUT HICKORY
CARPINUS CAROLINIANA*	AMERICAN HORNBEAM
CERCIS CANADENSIS*	EASTERN REDBUD
CHIONANTHUS VIRGINICUS*	WHITE FRINGETREE
FRAXINUS PENNSYLVANICA*	GREEN ASH
ILEX CASSINE	DAHOON HOLLY
ILEX GLABRA*	INKBERRY HOLLY
JUNIPERUS SILICICOLA	SOUTHERN RED CEDAR
MORUS RUBRA*	RED MULBERRY
MAGNOLIA VIRGINIANA	SWEET BAY
NYSSA SYLVATICA BIFLORA*	SWAMP TUPELO
PRUNUS ANGUSTIFOLIA*	CHICKASAW PLUM
PINUS ELLIOTTII	SLASH PINE
PINUS PALUSTRIS	LONGLEAF PINE
QUERCUS AUSTRINA**	BLUFF OAK
QUERCUS MICHAUXII	BASKET OAK
QUERCUS VIRGINIANA**	SEEDLING SOUTHERN LIVE OAK
TAXODIUM ASCENDENS*	POND CYPRESS
TAXODIUM DISTICHUM**	BALD CYPRESS
VACCINIUM ARBOREUM*	FARKLEBERRY
VIBURNUM OBOVATUM*	WALTER'S VIBURNUM



Landscape Plan – Upper Pond

PROPOSED TREES (333 total trees proposed)

SCIENTIFIC NAME	COMMON NAME
AESCLUSUS PAVIA*	RED BUCKEYE
ACER RUBRUM `FLORIDA FLAME`	FLORIDA FLAME RED MAPLE
CARYA GLABRA*	PIGNUT HICKORY
CARPINUS CAROLINIANA*	AMERICAN HORNBEAM
CERCIS CANADENSIS*	EASTERN REDBUD
CHIONANTHUS VIRGINICUS*	WHITE FRINGETREE
FRAXINUS PENNSYLVANICA*	GREEN ASH
ILEX CASSINE	DAHOON HOLLY
ILEX GLABRA*	INKBERRY HOLLY
JUNIPERUS SILICICOLA	SOUTHERN RED CEDAR
MORUS RUBRA*	RED MULBERRY
MAGNOLIA VIRGINIANA	SWEET BAY
NYSSA SYLVATICA BIFLORA*	SWAMP TUPELO
PRUNUS ANGUSTIFOLIA*	CHICKASAW PLUM
PINUS ELLIOTTII	SLASH PINE
PINUS PALUSTRIS	LONGLEAF PINE
QUERCUS AUSTRINA**	BLUFF OAK
QUERCUS MICHAUXII	BASKET OAK
QUERCUS VIRGINIANA**	SEEDLING SOUTHERN LIVE OAK
TAXODIUM ASCENDENS*	POND CYPRESS
TAXODIUM DISTICHUM**	BALD CYPRESS
VACCINIUM ARBOREUM*	FARKLEBERRY
VIBURNUM OBOVATUM*	WALTER'S VIBURNUM



- ← Sidewalk
- ← Seating areas
- ← Littoral plantings
- ← New headwall and overlook

Landscape Plan

PROPOSED SHRUBS/GROUNDCOVERS/AQUATICS	
SCIENTIFIC NAME	COMMON NAME
SERENOA REPENS 'CINEREA'	SILVER SAW PALMETTO
VIBURNUM OBOVATUM `MRS. SCHILLER`S DELIGHT`	MRS. SCHILLER`S DELIGHT VIBURNUM
ZAMIA FLORIDANA	COONTIE
CANNA FLACCIDA	YELLOW CANNA
HEMEROCALLIS X 'WHITE SPIDER'	WHITE SPIDER DAYLILY
IRIS VIRGINICA	BLUE FLAG IRIS
JUNCUS EFFUSUS	SOFT RUSH
MIMOSA STRIGILLOSA	SUNSHINE MIMOSA
MUHLENBERGIA CAPILLARIS	PINK MUHLY
PONTERDERIA CORDATA	PICKEREL WEED
RUDBECKIA HIRTA	BLACK-EYED SUSAN
SPARTINA BAKERI	SAND CORD GRASS
SCIRPUS CALIFORNICUS	GIANT BULRUSH
SAGITTARIA LANCIFOLIA	DUCK POTATO
SPARTINA PATENS	SALTMEADOW CORDGRASS
TRIPSACUM FLORIDANUM	DWARF FAKAHATCHEE GRASS
THALIA GENICULATA	FIRE FLAG



Landscape Plan – Upper Pond

PROPOSED SHRUBS/GROUNDCOVERS/AQUATICS	
SCIENTIFIC NAME	COMMON NAME
SERENOA REPENS 'CINEREA'	SILVER SAW PALMETTO
VIBURNUM OBOVATUM `MRS. SCHILLER` S DELIGHT`	MRS. SCHILLER` S DELIGHT VIBURNUM
ZAMIA FLORIDANA	COONTIE
CANNA FLACCIDA	YELLOW CANNA
HEMEROCALLIS X 'WHITE SPIDER'	WHITE SPIDER DAYLILY
IRIS VIRGINICA	BLUE FLAG IRIS
JUNCUS EFFUSUS	SOFT RUSH
MIMOSA STRIGILLOSA	SUNSHINE MIMOSA
MUHLENBERGIA CAPILLARIS	PINK MUHLY
PONTERDERIA CORDATA	PICKEREL WEED
RUDBECKIA HIRTA	BLACK-EYED SUSAN
SPARTINA BAKERI	SAND CORD GRASS
SCIRPUS CALIFORNICUS	GIANT BULRUSH
SAGITTARIA LANCIFOLIA	DUCK POTATO
SPARTINA PATENS	SALTMEADOW CORDGRASS
TRIPSACUM FLORIDANUM	DWARF FAKAHATCHEE GRASS
THALIA GENICULATA	FIRE FLAG



Landscape Plan – Upper Pond

PROPOSED TREES (333 total trees proposed)

SCIENTIFIC NAME	COMMON NAME
AESCLUSUS PAVIA*	RED BUCKEYE
ACER RUBRUM `FLORIDA FLAME`	FLORIDA FLAME RED MAPLE
CARYA GLABRA*	PIGNUT HICKORY
CARPINUS CAROLINIANA*	AMERICAN HORNBEAM
CERCIS CANADENSIS*	EASTERN REDBUD
CHIONANTHUS VIRGINICUS*	WHITE FRINGETREE
FRAXINUS PENNSYLVANICA*	GREEN ASH
ILEX CASSINE	DAHOON HOLLY
ILEX GLABRA*	INKBERRY HOLLY
JUNIPERUS SILICICOLA	SOUTHERN RED CEDAR
MORUS RUBRA*	RED MULBERRY
MAGNOLIA VIRGINIANA	SWEET BAY
NYSSA SYLVATICA BIFLORA*	SWAMP TUPELO
PRUNUS ANGUSTIFOLIA*	CHICKASAW PLUM
PINUS ELLIOTTII	SLASH PINE
PINUS PALUSTRIS	LONGLEAF PINE
QUERCUS AUSTRINA**	BLUFF OAK
QUERCUS MICHAUXII	BASKET OAK
QUERCUS VIRGINIANA**	SEEDLING SOUTHERN LIVE OAK
TAXODIUM ASCENDENS*	POND CYPRESS
TAXODIUM DISTICHUM**	BALD CYPRESS
VACCINIUM ARBOREUM*	FARKLEBERRY
VIBURNUM OBOVATUM*	WALTER'S VIBURNUM





UF-708 Graham Stormwater Improvements

Tree Impacts

TOTAL NUMBER OF NON-HERITAGE TREES REMOVED	869	TOTAL MITIGATION TREES REQUIRED (NON-HERITAGE)	1,738 TREES
NUMBER OF HERITAGE TREES REMOVED	66	TOTAL MITIGATION TREES REQUIRED (HERITAGE)	512 TREES
TOTAL NUMBER OF TREES REMOVED	935	TOTAL MITIGATION TREES REQUIRED	2,250 TREES
PROPOSED TREES (UF-708 only)		333 TREES	
MITIGATION DEFICIT		1,914 TREES	
MITIGATION FEE		\$479,250	

*Lakes, Vegetation, and Landscape Committee
Design Development
June 4, 2026*



UF-677 PK Yonge Gymnasium

Tamera Baughman, Project Manager, Planning, Design & Construction

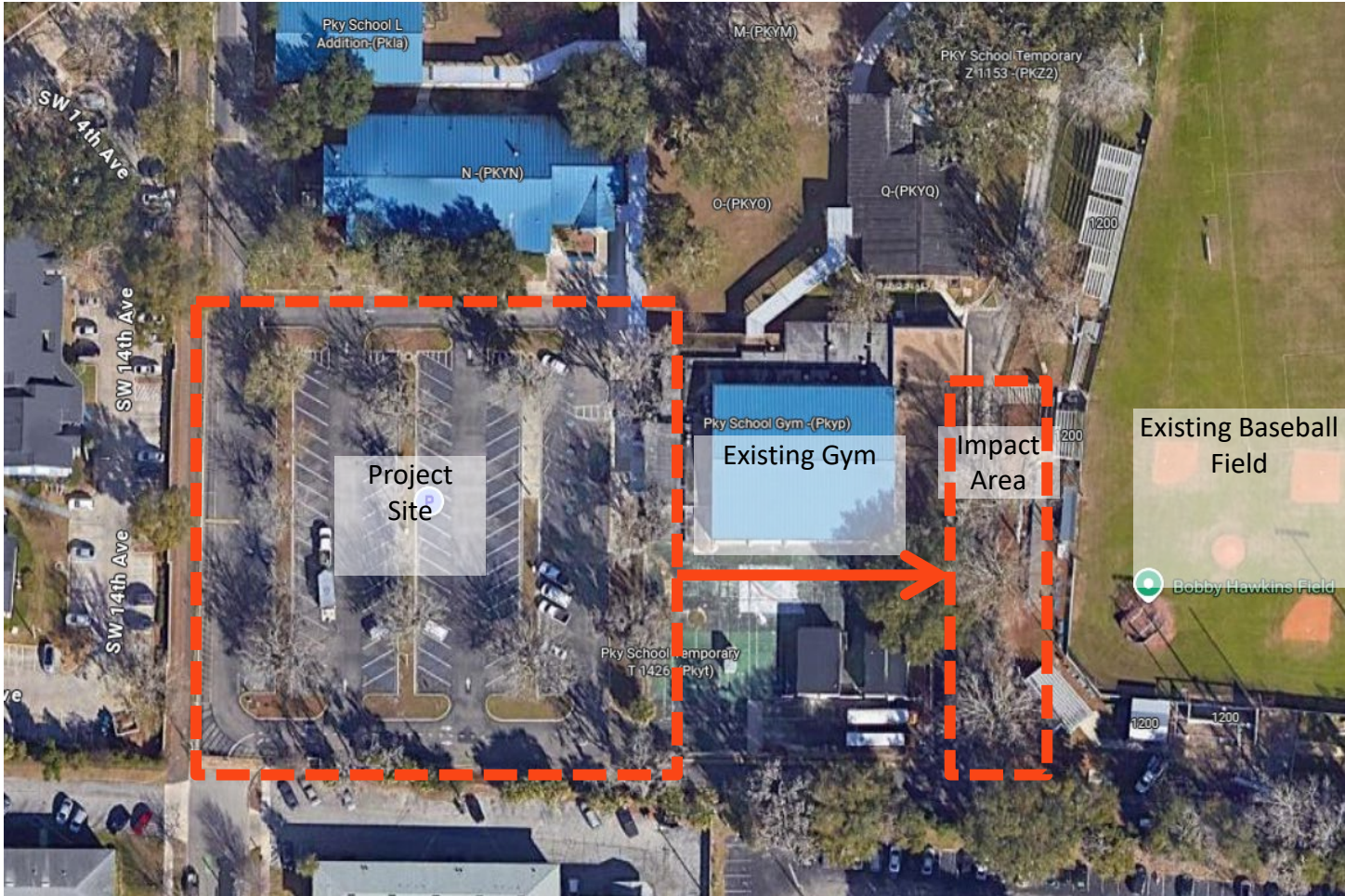
Project Overview

- Project is located on the PK Yonge Campus, between SW Depot Ave and SW 16th Ave.
- Includes demo to the gymnasium originally built in 1957. In 2007 the FL Dept. of Education recommended replacing the gym rather than renovating it.
- The existing gymnasium must remain operational until the new facility is completed.
- Construction of the new 2 story gymnasium is underway.
- This project was previously reviewed and recommended for approval by the Committee in November 2025.



Project Overview

- UF Environmental, Health, & Safety has requested that this project provide an accessible route between the new gym and the existing baseball fields.
- This additional work requires the construction of new steps, ramp, and sidewalks to connect to the existing facility.



Project Overview

- Two heritage size Shumard oaks will be impacted by the development.
- Both were reviewed by Russell Adams, ISA Certified Arborist and determined to be in poor condition with visible decay from prior pruning cuts of subordinate branches.
- Additionally, there is another heritage size Shumard oak that is in similar condition just north of the construction area and also in poor condition
- All three trees have been recommended for removal due to condition and potential safety hazards.



Existing Trees





Mitigation Summary:

- Three heritage size Shumard oaks are proposed for removal, all in poor condition as determined by an ISA Certified Arborist.
- Per UF Tree Mitigation Policy, *“those trees whose health is confirmed to be “fair” or worse as determined by a certified arborist and confirmed by the Lakes, Vegetation & Landscaping Committee (LVLC) shall be exempt from mitigation.”*
- No mitigation for these trees is proposed, however, as the design for this area develops, opportunities to plant additional trees within this area will be evaluated.



Motion to forward the project to the VP for Construction, Facilities and Real Estate with a recommendation to approve as presented.

UF-677

PK YONGE GYMNASIUM

June 4, 2026

LAKES, VEGETATION, AND LANDSCAPE COMMITTEE



UF-702 Utility Infrastructure Upgrades

FRANCISCO OQUENDO, UF PD+C ASSISTANT DIRECTOR OF CONSTRUCTION

Project Overview

- The project is located along Stadium Road and extends to surrounding corridors including Gale Lemerand Drive, Fletcher Drive, Buckman Drive, and Hamilton Alley.
- The project will upgrade utility infrastructure including, including **steam, chilled water, electrical, sanitary sewer, storm sewer, potable water, reclaimed water, gas, and telecommunications** systems based on prior engineering study recommendations.
- The project aims to address capacity limitations and reliability issues while supporting new campus developments and ensuring long-term performance and sustainability.



Site Overview

- The site currently serves as a core campus roadway providing access for buses and pedestrians.
- The site and surrounding areas land use will remain un-changed with the project.
- The site is within the campus historic district. However, no building construction is associated with this project.
- Utilities in this area support numerous existing buildings, as well as ongoing UF projects such as the Ben Hill Griffin Stadium Improvements and the Hamilton Center and accommodate potential future development.



UF-702 Utility Infrastructure Upgrades

Site Conditions

- The existing condition includes expansive roadway section and sidewalks. The overall environment is open and dominated by circulation space, with some existing trees and fragmented canopy along the corridor.
- The area is relatively flat and is not located within designated 100-year floodplain or wetland areas.

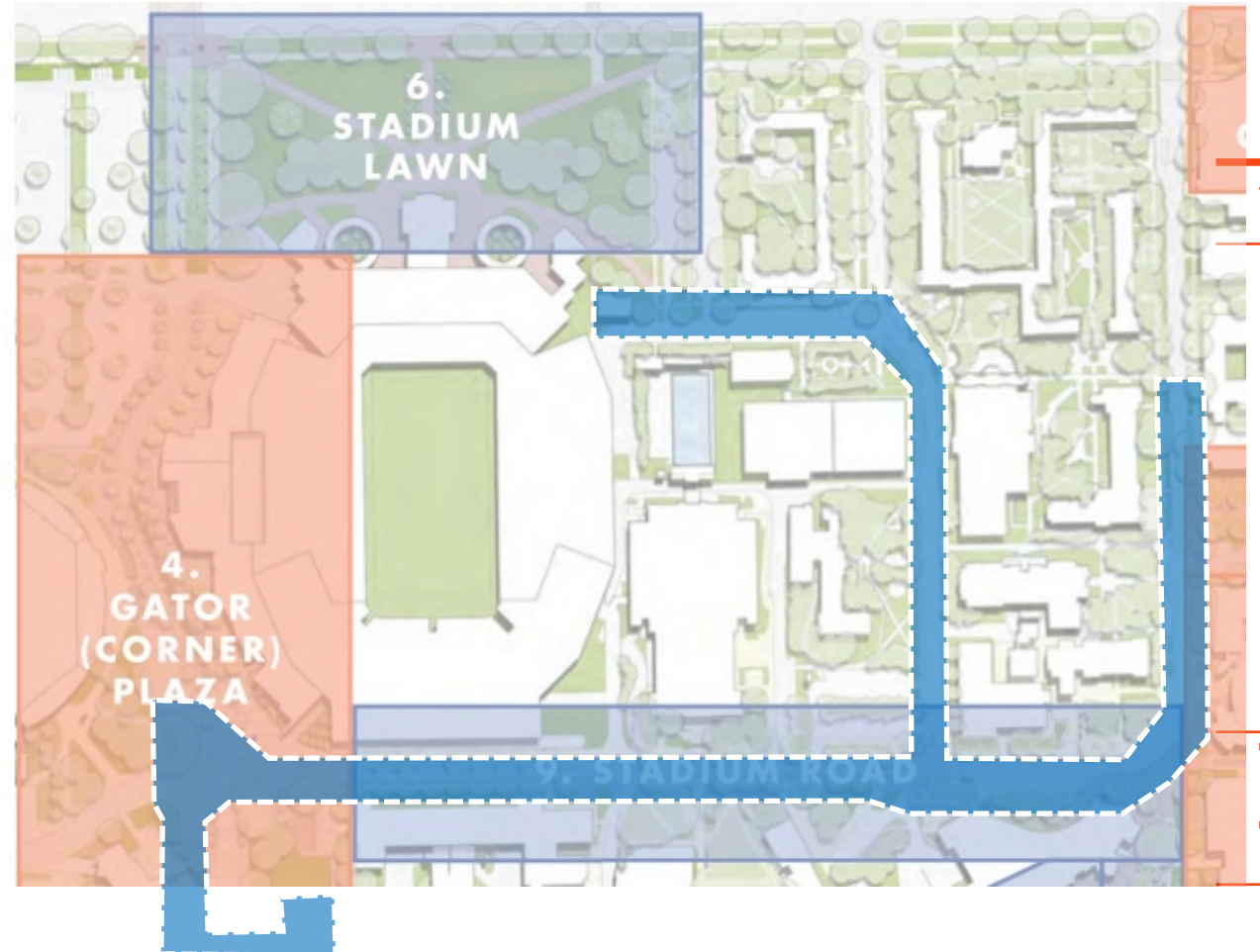


Landscape Master Plan

- The project site touches several LMP Priority Projects and areas for campus enhancement including Stadium Road, Gator Corner, and Buckman Drive.
- The corridor design will consider the recommendations in UF Landscape Master Plan with **the focus of work being to replace aging utility infrastructure.**

Project goals also include:

- Improve pedestrian and bicycle safety
- Preserve healthy existing trees, where possible
- Supports efficient transit and service operations
- Incorporate thoughtful replanting, hardscape, and amenities to enhance the corridor





Motion to forward the project to the VP for Construction, Facilities and Real Estate with a recommendation to approve as presented.

UF-702 UTILITY INFRASTRUCTURE UPGRADES

DATE OF LVL COMMITTEE MEETING



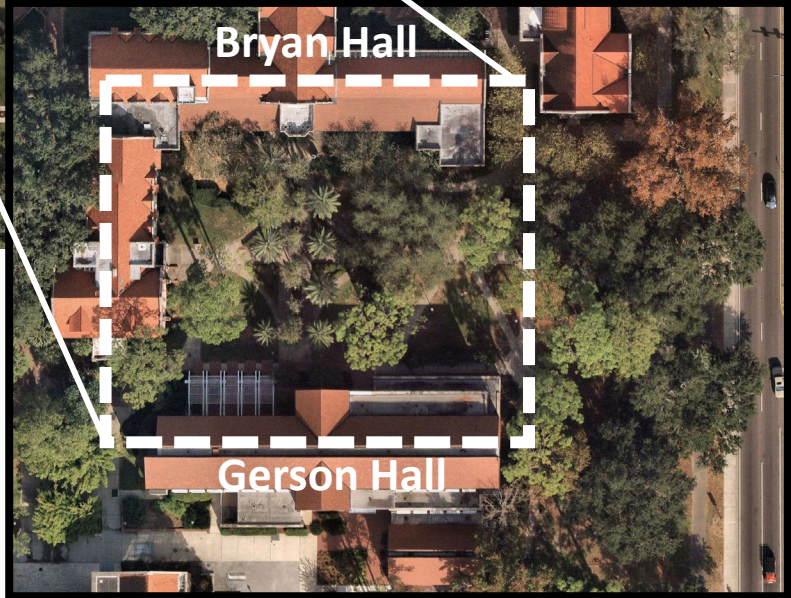
MP09464 Design/Erect Alfred C. Warrington IV Statue

Alex Gauthier

MP09464 Design/Erect Alfred C. Warrington IV Statue

Project Overview

- The project is located in the existing Warrington Courtyard.
- The College of Business has commissioned and been approved to install a new memorial statue of Mr. Alfred C. Warrington IV within the existing Warrington courtyard.
- The purpose of the project is to renovate the courtyard to best support the new statue while providing a landscape refresh; sidewalk repairs and replacement; accessibility; sightlines and safety; lighting; wayfinding; and better connectivity.

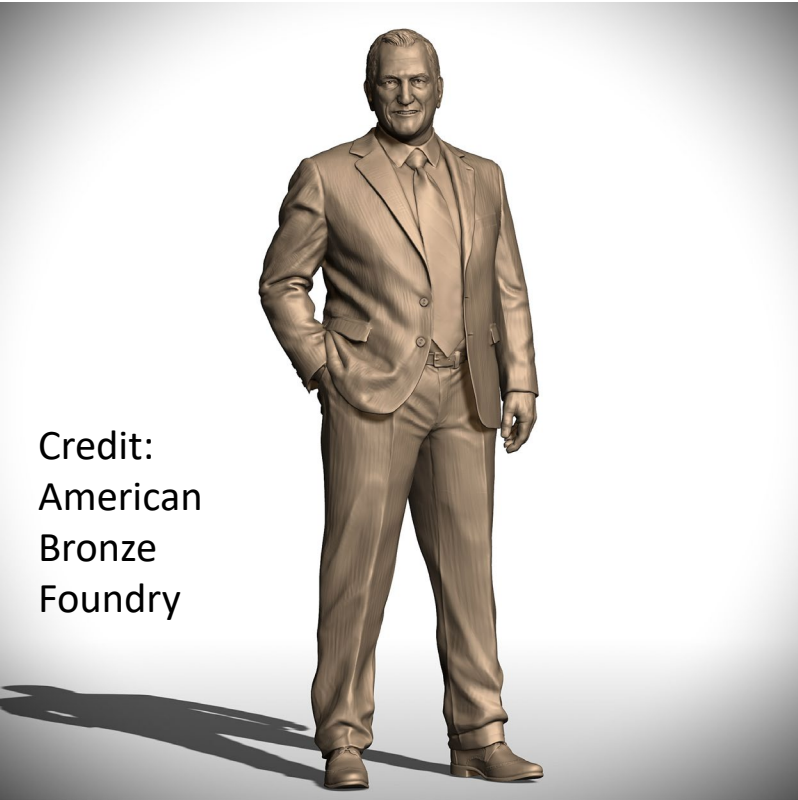


Project Overview

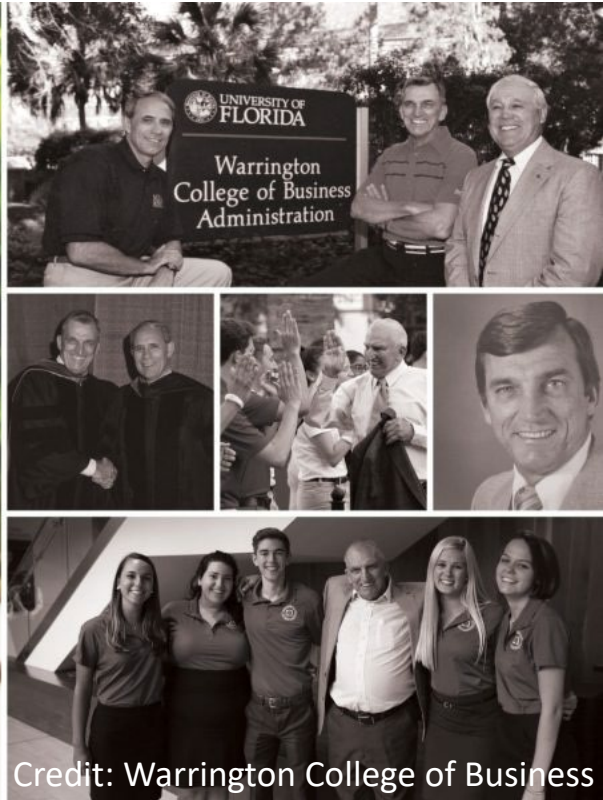
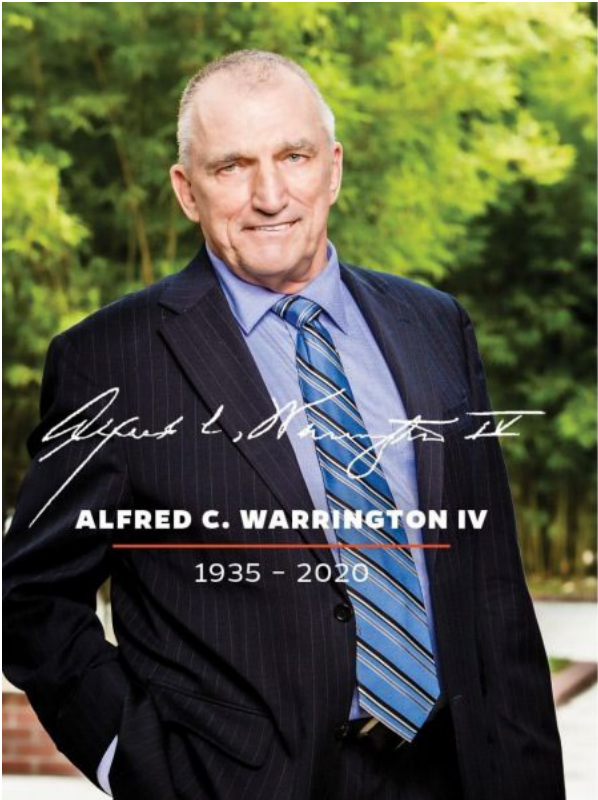


Project Overview

- The statue will create a welcoming and approachable photo opportunity to celebrate Mr. Warrington’s contributions to the College and its prominence in the business realm.

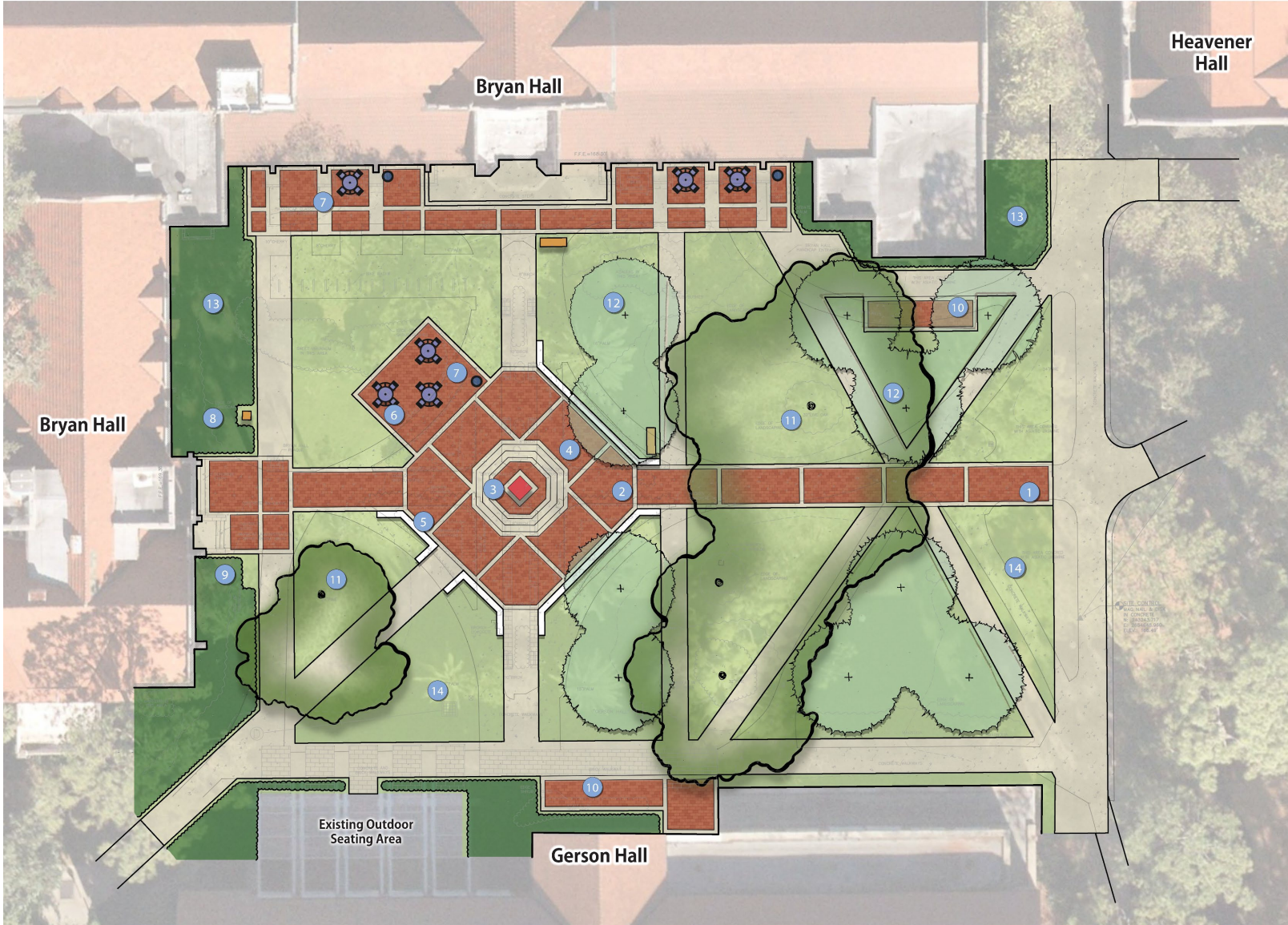


Credit:
American
Bronze
Foundry



Credit: Warrington College of Business

Project Overview

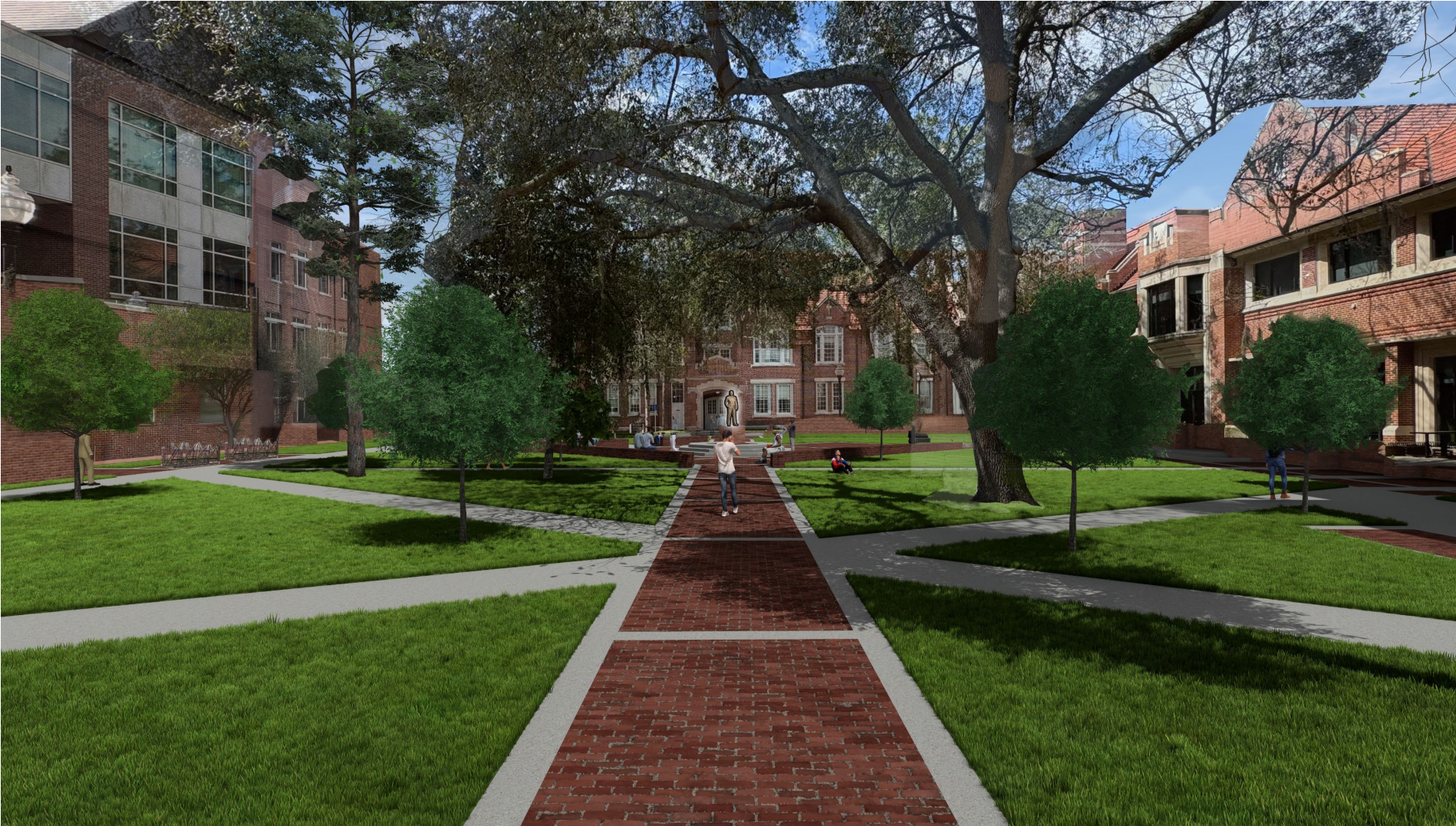


- ### Legend
- 1 Pedestrian Promenade
 - 2 Plaza Space
 - 3 Warrington Memorial Statue
 - 4 Elevated Platform
 - 5 Seatwalls
 - 6 Seating Area
 - 7 Litter Receptacle
 - 8 Relocated Bryan Hall Plaque
 - 9 Building Entry Sign
 - 10 Bike Rack Pad
 - 11 Existing Tree Canopy
 - 12 Proposed Trees
 - 13 Enhanced Landscape Plantings
 - 14 Open Lawn

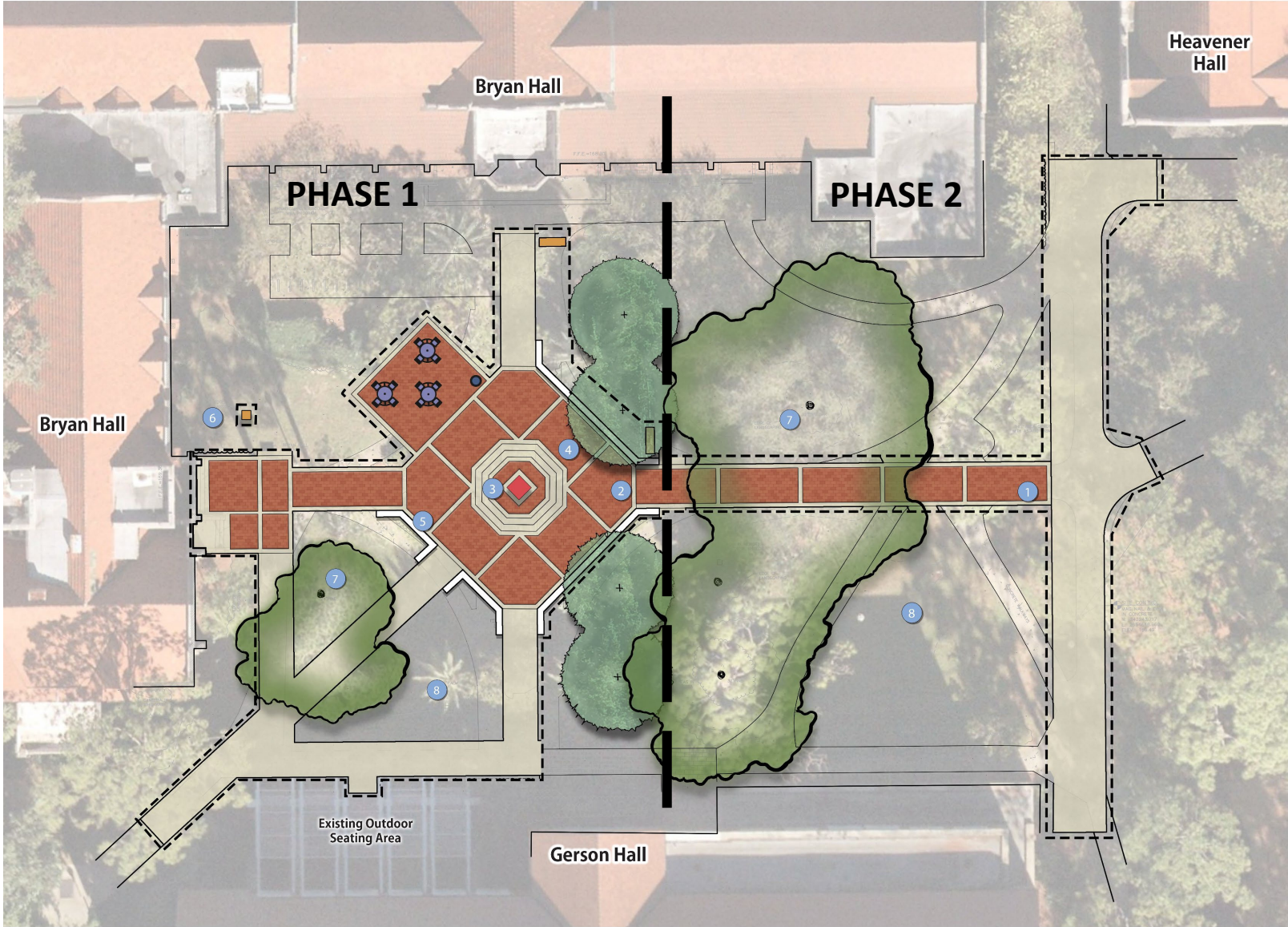


MP09464 Design/Erect Alfred C. Warrington IV Statue

Project Overview



Project Overview



- Legend**
- 1 Pedestrian Promenade
 - 2 Plaza Space
 - 3 Warrington Memorial Statue
 - 4 Elevated Platform
 - 5 Seatwalls
 - 6 Relocated Bryan Hall Plaque
 - 7 Existing Tree Canopy
 - 8 Open Lawn

Site Overview & Conditions

- The courtyard is used to access Bryan and Gerson Halls or to travel through, primarily from northeast to southwest.
- It is located within the Historic District of campus.
- The courtyard includes a large Live Oak, several large Loblolly and Longleaf Pines, Phoenix Date Palms, a memorial Magnolia, smaller Little Gem Magnolias, several Drake Elms, and several East Palatka Hollies.
- The Live Oak, Pines, and memorial Magnolia are in good condition.
- The smaller Magnolias, Date Palms, and Drake Elms are in fair condition.
- The Hollies are in poor condition.



MP09464 Design/Erect Alfred C. Warrington IV Statue

Site Overview & Conditions

- Foundation plantings
- Bryan's ADA entry
- Boxwood 'parterre'
- Emergency phone
- Gerson's terrace
- Historic plaque for Bryan Hall



Select Existing Landscape of Importance

- To remain and be incorporated into new landscaping
- Memorial Magnolia

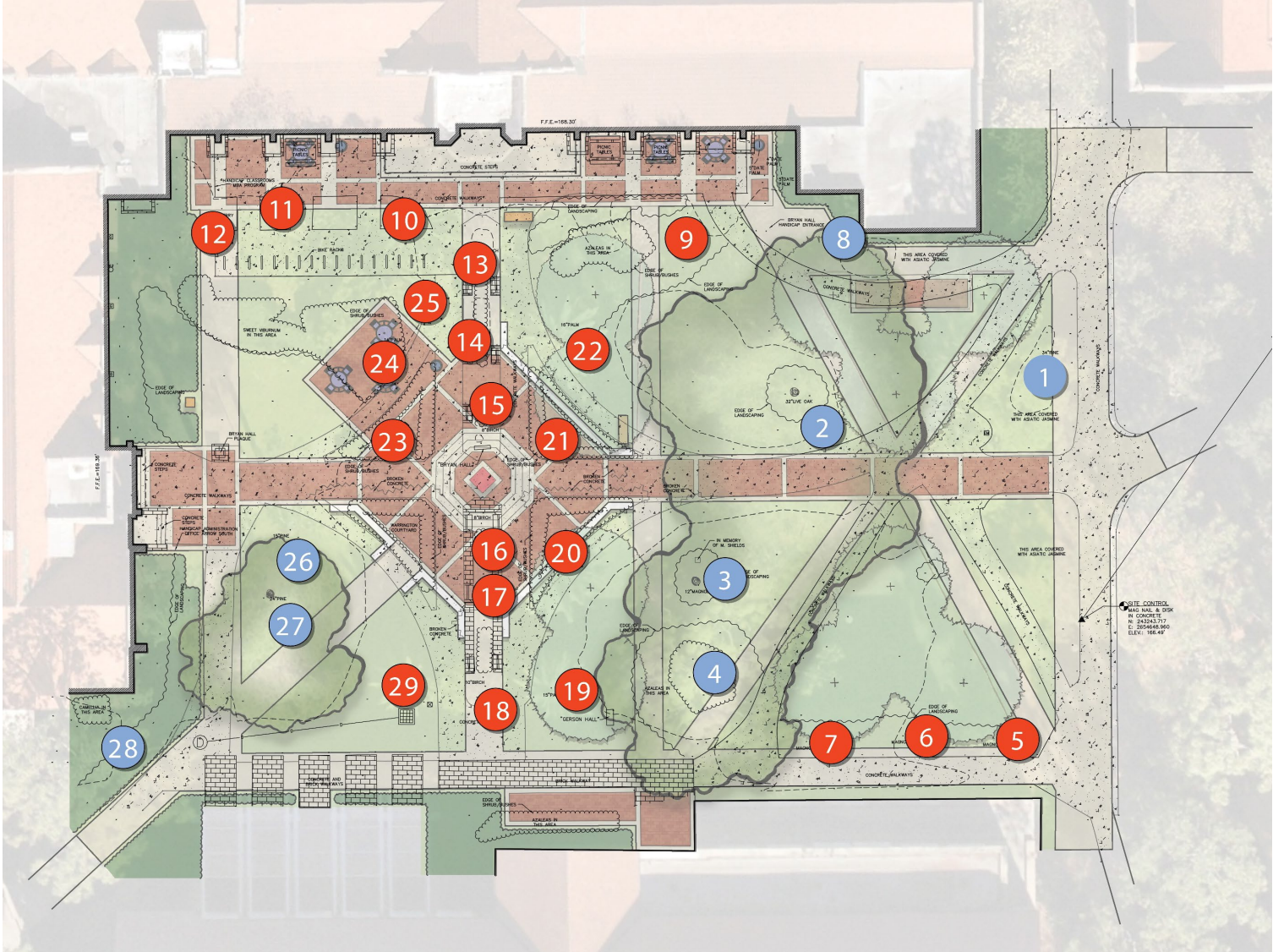


- Relocated Camellias



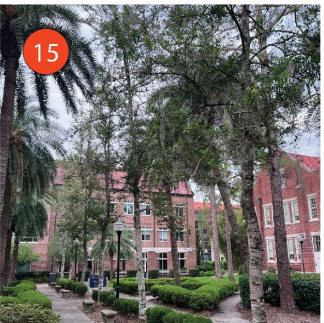
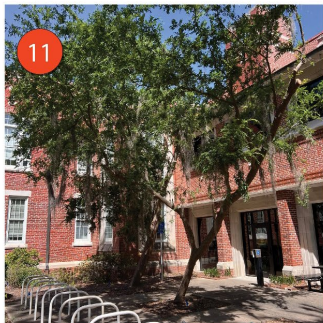
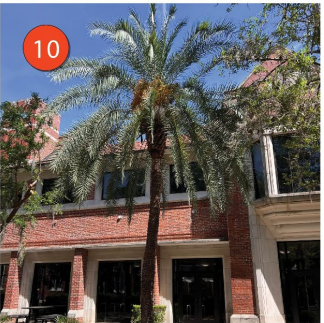
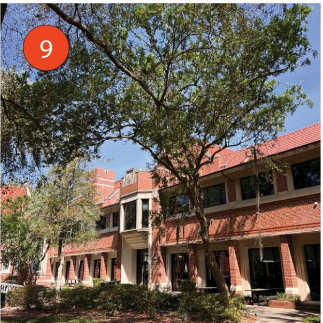
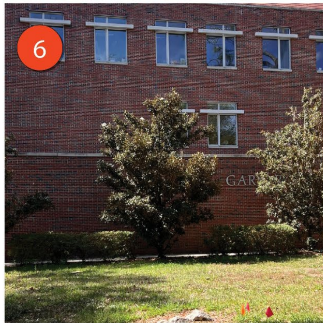
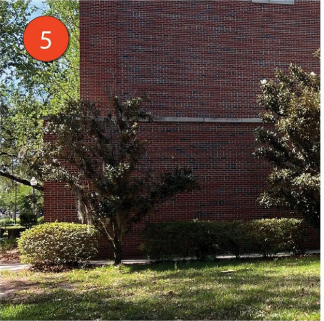
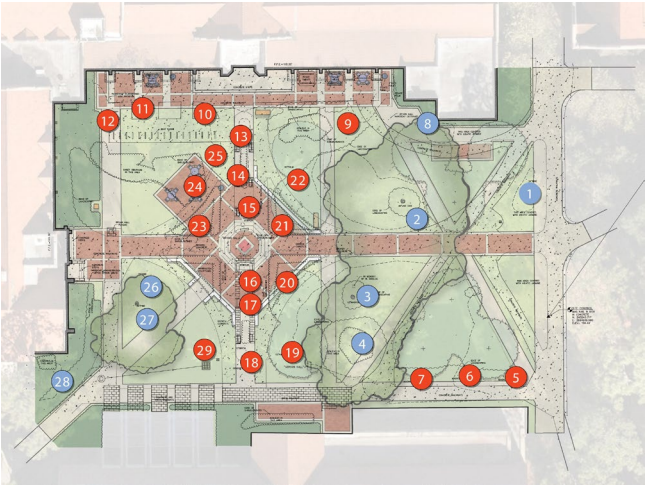
Tree Impacts

- The project will result in the removal of 21 regulated trees.
- No trees proposed for removal are heritage trees.
- The concept master plan proposes 10 replacement trees.



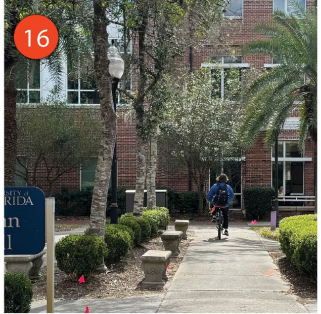
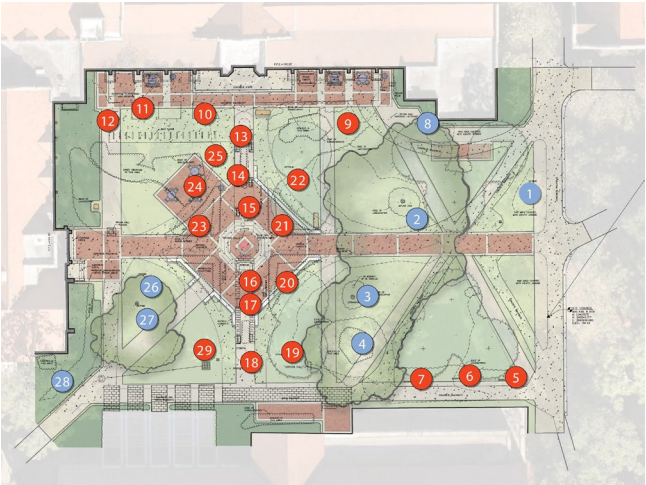
Tree Impact Summary

- 8 - Trees to remain
- 9 - Trees to be removed



Tree Impact Summary

- 8 - Trees to remain
- 9 - Trees to be removed





MP09464 Design/Erect Alfred C. Warrington IV Statue

Tree Impact Summary

Tree No.	Scientific Name	Common Name	DBH	Remove	Remain	Mitigation	Replacement Trees
UF Warrington Courtyard							
1	<i>Pinus palustris</i>	Longleaf Pine	34		X		
2	<i>Quercus virginiana</i>	Live Oak	32		X		
3	<i>Magnolia grandiflora</i>	Southern Magnolia	12		X		
4	<i>Pinus palustris</i>	Longleaf Pine	32		X		
5	<i>Magnolia grandiflora</i>	Southern Magnolia	10	X		2:1	2
6	<i>Magnolia grandiflora</i>	Southern Magnolia	10	X		2:1	2
7	<i>Magnolia grandiflora</i>	Southern Magnolia	10	X		2:1	2
8	<i>Sabal palmetto</i>	Sabal Palm	18		X		
9	<i>Ulmus parvifolia 'Drake'</i>	Drake Elm	16	X		2:1	2
10	<i>Phoenix dactylifera</i>	Medjool Date Palm	14	X		2:1	2
11	<i>Ulmus parvifolia 'Drake'</i>	Drake Elm	8	X		2:1	2
12	<i>Ulmus parvifolia 'Drake'</i>	Drake Elm	10	X		2:1	2
13	<i>Ilex x attenuata 'East Palakta'</i>	East Palatka Holly	8	X		2:1	2
14	<i>Ilex x attenuata 'East Palakta'</i>	East Palatka Holly	10	X		2:1	2
15	<i>Ilex x attenuata 'East Palakta'</i>	East Palatka Holly	8	X		2:1	2
16	<i>Ilex x attenuata 'East Palakta'</i>	East Palatka Holly	8	X		2:1	2



MP09464 Design/Erect Alfred C. Warrington IV Statue

Tree Impact Summary

Tree No.	Scientific Name	Common Name	DBH	Remove	Remain	Mitigation	Replacement Trees
17	<i>Ilex x attenuata</i> 'East Palakta'	East Palatka Holly	8	X		2:1	2
18	<i>Ilex x attenuata</i> 'East Palakta'	East Palatka Holly	10	X		2:1	2
19	<i>Phoenix dactylifera</i>	Medjool Date Palm	15	X		2:1	2
20	<i>Phoenix dactylifera</i>	Medjool Date Palm	15	X		2:1	2
21	<i>Phoenix dactylifera</i>	Medjool Date Palm	16	X		2:1	2
22	<i>Phoenix dactylifera</i>	Medjool Date Palm	16	X		2:1	2
23	<i>Phoenix dactylifera</i>	Medjool Date Palm	15	X		2:1	2
24	<i>Phoenix dactylifera</i>	Medjool Date Palm	14	X		2:1	2
25	<i>Pinus taeda</i>	Loblolly Pine	18	X		2:1	2
26	<i>Pinus taeda</i>	Loblolly Pine	15		X		
27	<i>Pinus taeda</i>	Loblolly Pine	24		X		
28	<i>Pinus taeda</i>	Loblolly Pine	20		X		
29	<i>Phoenix dactylifera</i>	Medjool Date Palm	10	X		2:1	2
UF Warrington Courtyard TOTAL TREES REMOVED:							21
UF Warrington Courtyard TOTAL MITIGATION:							42
Proposed trees:							10
Difference/Replacement Tree Deficit:							32
Cost per replacement tree if not planted:							\$ 250.00
Tree Mitigation Payment, UF Warrington Courtyard:							\$ 8,000.00

Landscape Plan

- The project is located in precinct S.1 Historic District.
- The project will utilize plants from the UF LMP and those that will blend with existing to remain landscaping.
- Plantings will provide a few pollinator-friendly plant species.

PROPOSED HARDSCAPE & LANDSCAPE MATERIALS

HARDSCAPE



Standard Concrete



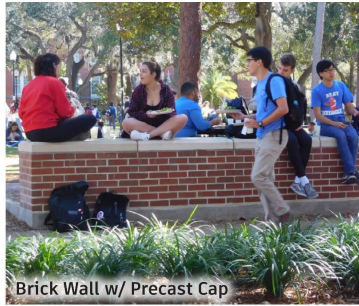
Brick Pavers



Brick Banding w/ Concrete Field



Concrete Banding w/ Brick Field



Brick Wall w/ Precast Cap

LANDSCAPE



Live Oak
Quercus virginiana



Coontie
Zamia pumila



Leather Fern
Rumohra adiantiformis



Holly Fern
Cyrtomium falcatum



Lily of the Nile
Agapanthus africanus



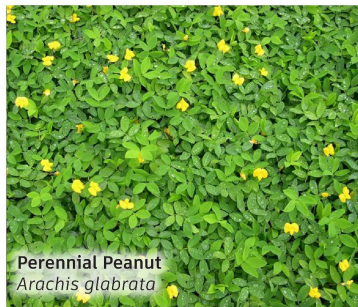
Liriope
Liriope muscari



Mondo Grass
Ophiopogon japonicus



Asiatic Jasmine
Trachelospermum asiaticum



Perennial Peanut
Arachis glabrata



St. Augustine Grass
Stenotaphrum secundatum

Landscape Plan

- Site furnishings will be per the UF LMP including umbrella tables, traditional benches, litter receptacles, and bike racks.
- Two new building ID signs will be proposed for Bryan Hall and Warrington Courtyard.
- Stormwater will be minimal and consist of shallow, planted infiltration swales and address the overall courtyard drainage.





Motion to forward the project to the VP for Construction, Facilities and Real Estate with a recommendation to approve as presented.

**MP09464 Design/Erect Alfred C.
Warrington IV Statue**