

February 3, 2026  
LUFPC COMMITTEE MEETING  
DESIGN DEVELOPMENT (DD)



# UF-672 New Music Building

*Milo Zapata, Project Manager PD+C*

## Project Overview

- The project is located at the existing School of Music along Newell Drive between Stadium Road and Inner Road, just south of the University Auditorium.
- The scope of this project is to build a 39,000 GSF addition to the existing building.
- The purpose of the project is to provide much-needed space for the growing demands of the School of Music and provide a 500-seat concert hall for large scale performances.
- The addition is to be on the south side of the existing music building, east of Steinbrenner Band Hall





# UF-672 New Music Building

## Committee History

Attended the **Lakes, Vegetation & Landscaping** Meeting for DD on 12/4/25

- At the DD phase, the committee discussed the proposed site plan, tree removals and proposed landscape plan.
- Committee made a motion to recommend **approval** of the project as presented with request to coordinate trees along Newell with Tom Schlick moving forward.

Attended the **Parking & Transportation** Meeting for DD on 12/9/25

- At the DD phase, the committee discussed the proposed site plan and drop off locations
- Committee made a motion to recommend **approval** of the project as presented.



# UF-672 New Music Building

## Committee History

Attended the **PHB&S** Meeting for DD on 12/16/25

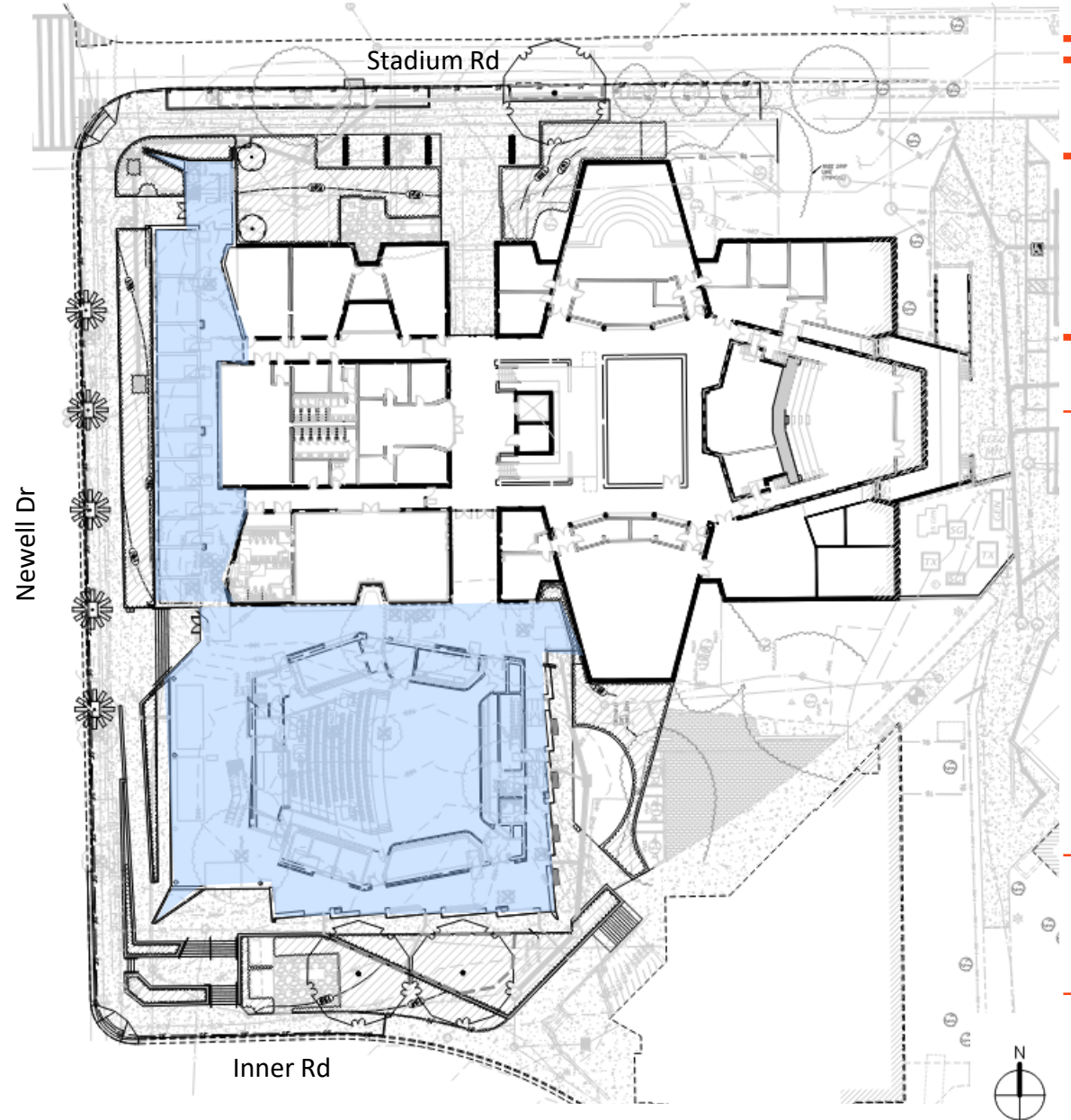
- At the DD phase, the committee discussed the proposed building design.
- Committee made a motion to recommend **approval** of the project as presented.

Previously attended the **Land Use & Facilities Planning Committee** Meeting for ASD on 10/7/25

- Committee made a motion to recommend **approval** of the project as presented with request to provide a report on the material, color, and maintenance considerations for the concert hall volume. As well as consider other options for the drop-off area plan.

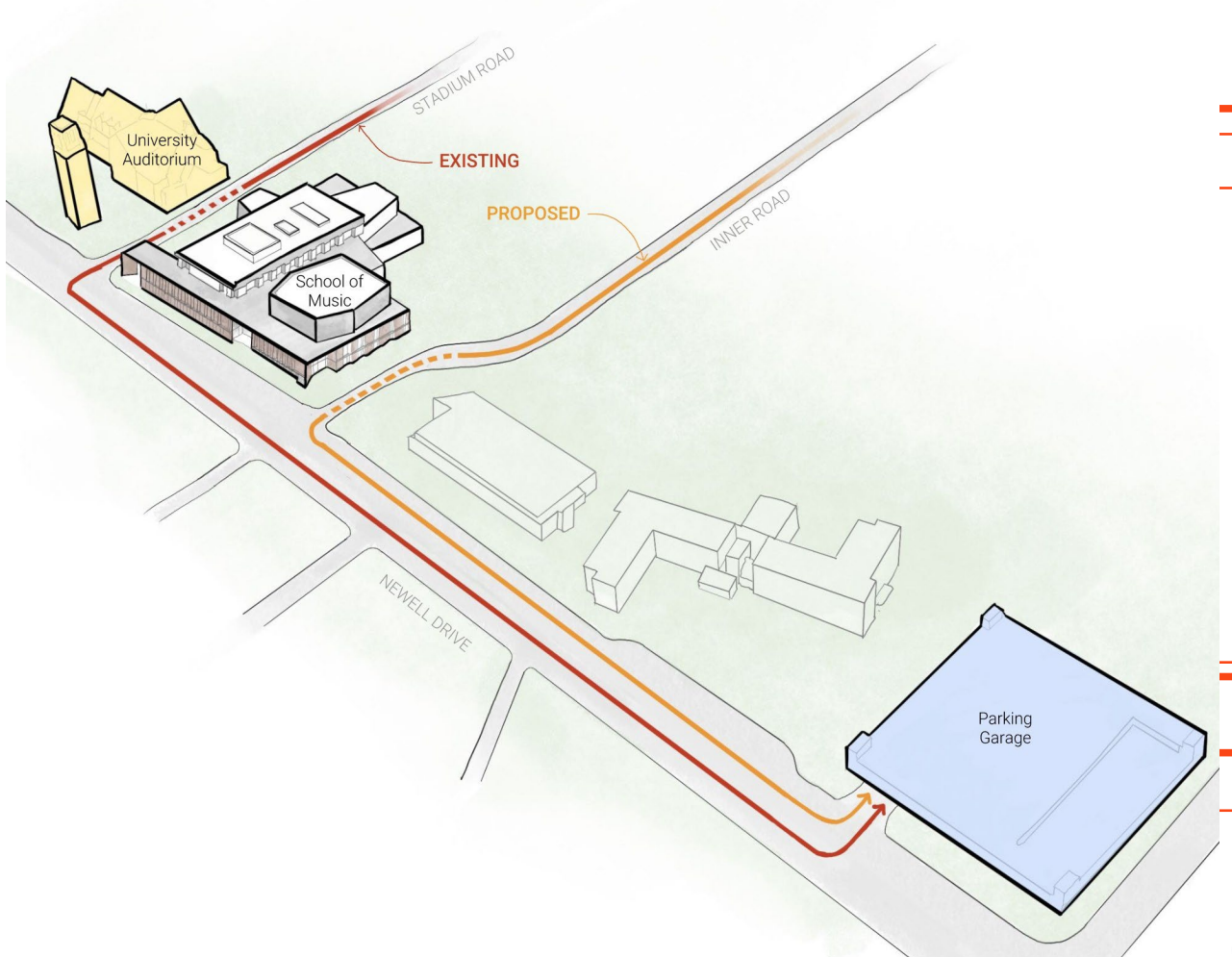
## Site Plan

- The proposed concert hall addition is on the south side of the existing Music Building with frontage on both Inner Road and Newell Drive.
- There is also a proposed addition on the western facade of the existing building that will require utility work along Newell Drive.
- Accessible routes are provided to the new entrance as well as the existing courtyard north of Steinbrenner.
- Tree cutouts in are proposed along Newell Road, however, utility conflicts will determine ability to plant trees along Newell.



## Project Overview – Drop-off

- UF PD&C and the Design Team investigated adding dedicated drop-off facilities but determined it was infeasible due to budgetary constraints and site plan space limitations. The determination was made that the existing plan will proceed as is without a dedicated drop-off facility.
- Parking is available in the garage to the south of Rinker Hall, and Inner Road accommodates both buses and bicycles as alternate sources of transportation.
- To manage event access, the School of Music will implement signage and dedicated staffing to direct traffic. Events will occur after hours and do not typically interfere with UF class periods.

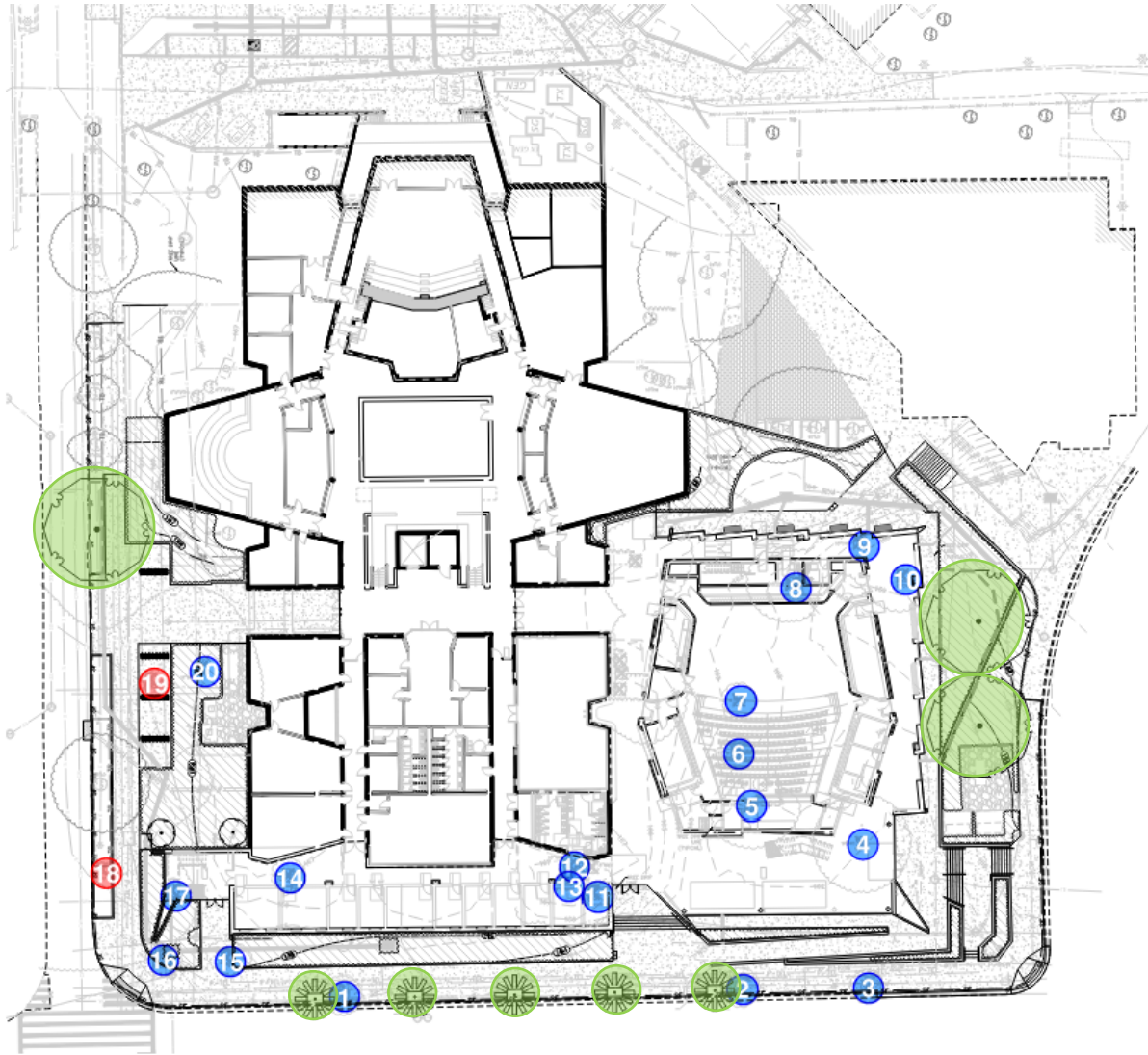


## Project Overview - Tree Impact Summary

- The committee reviewed the proposed removal of 20 trees—including 18 regulated trees and 2 heritage trees (one in poor condition)—during the ASD and DD Committee presentations.
- Conceptual landscape plan currently proposes 9 replacement trees on site.

<b>Number of Trees Removed</b>	20 trees
<b>Number of Heritage Trees Removed</b>	2 trees
<b>Replacement Trees Required (before replanting)</b>	48 trees
<b>Total Proposed Trees</b>	8 trees
<b>Total Required Replacement Trees</b>	40 trees
<b>Total Mitigation Fee</b>	<b>\$ 10,000.00</b>

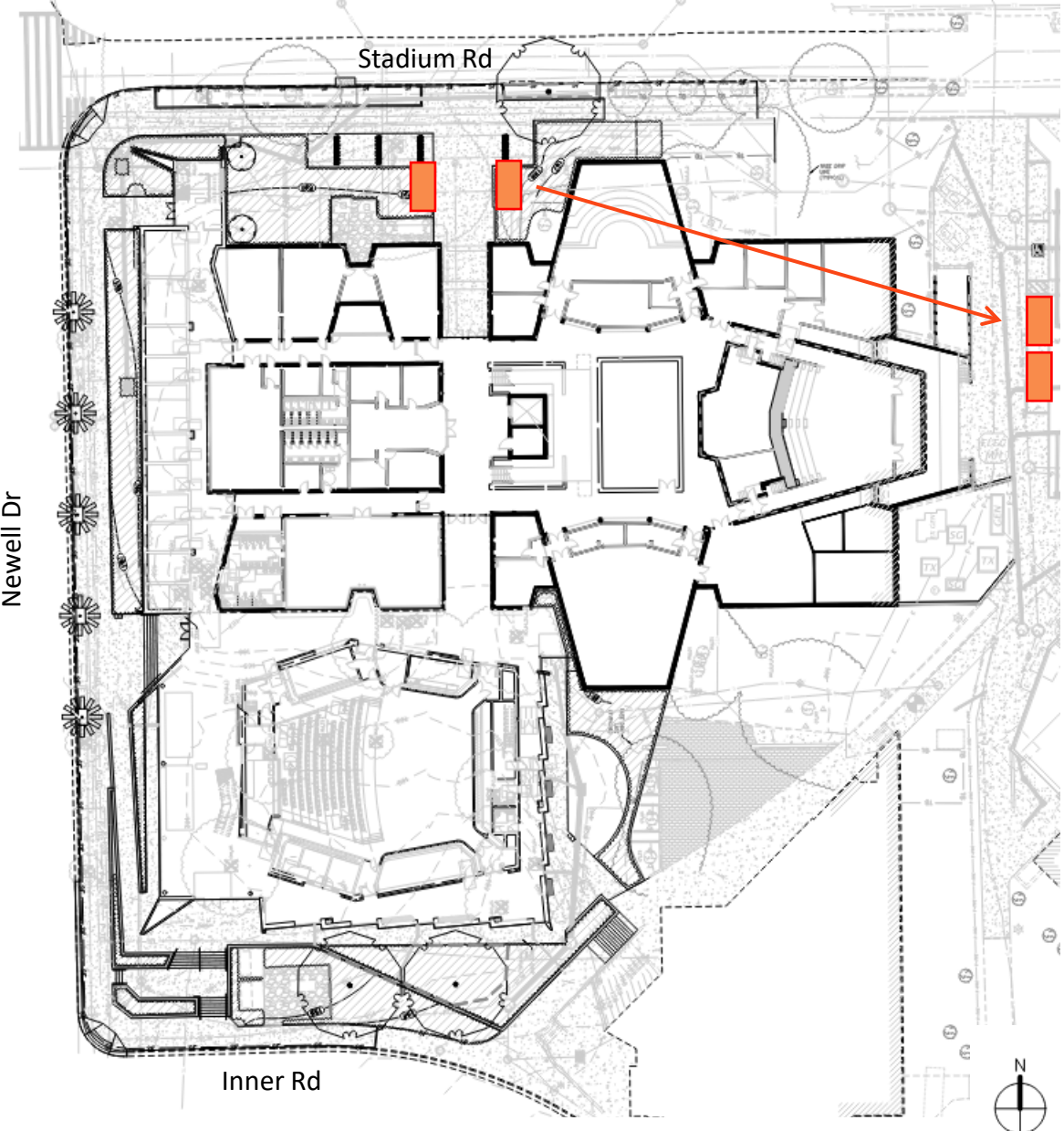
- Demo Tree – Heritage Size
- Demo Tree – Regulated Size



# UF-672 New Music Building

## Project Overview - Parking Mitigation Summary

- Two temporary service parking spaces will be relocated to the service drive east of the existing Music Building with the construction of the DCP Collaboratory.
- No net parking reduction is proposed as part of this project.



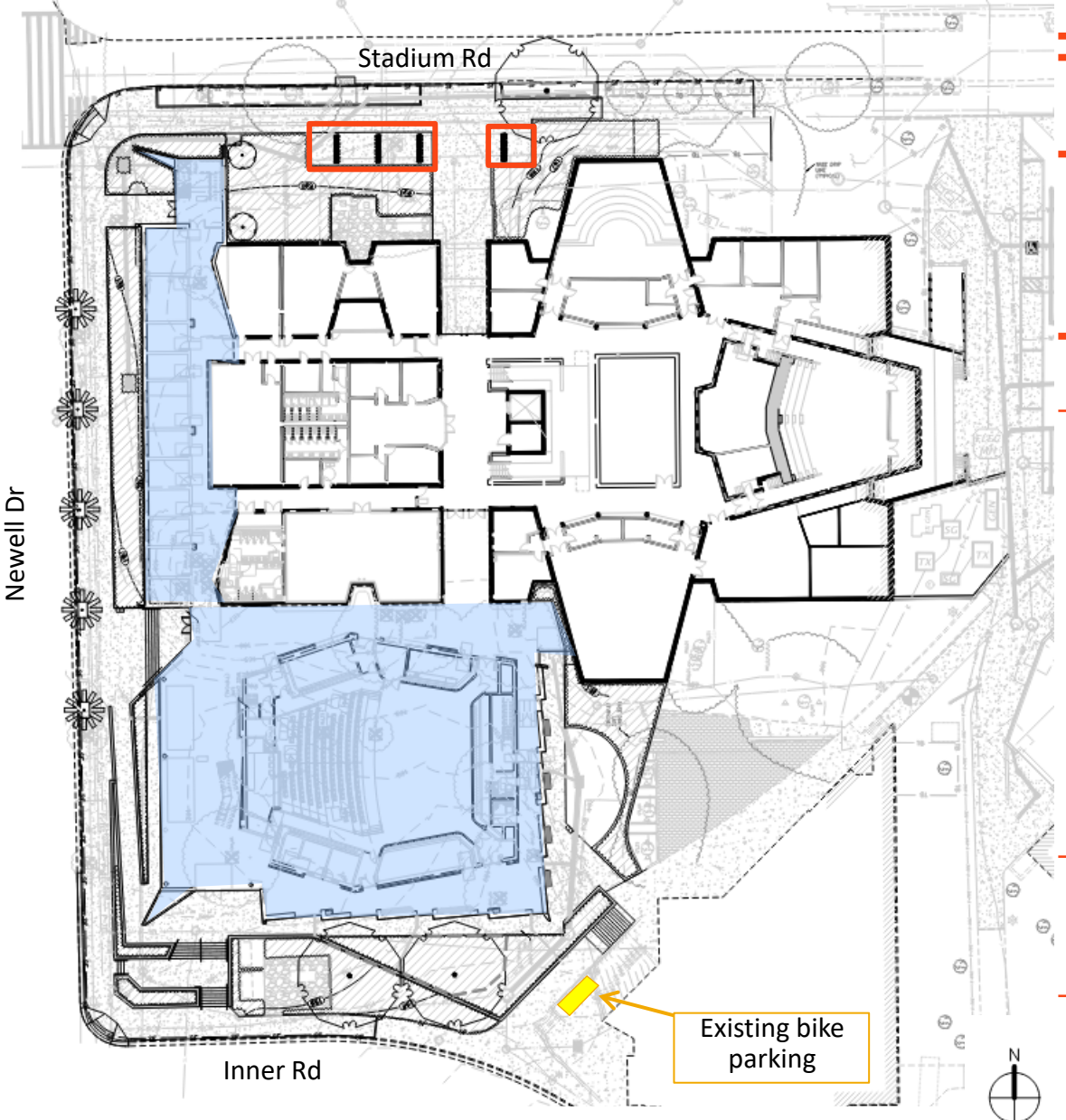
# UF-672 New Music Building

## Project Overview - Bike Parking

Proposed on-site bike parking

64 total spaces

- 8 proposed double-sided peak bike racks (8 spaces ea.)



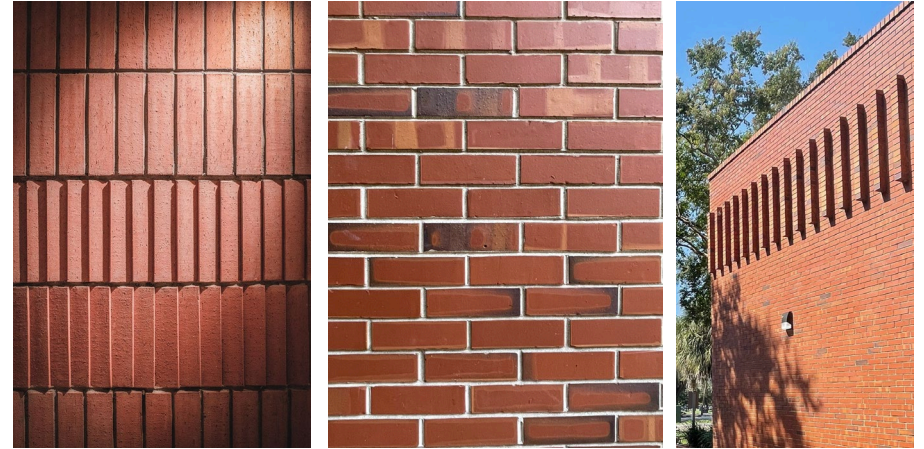
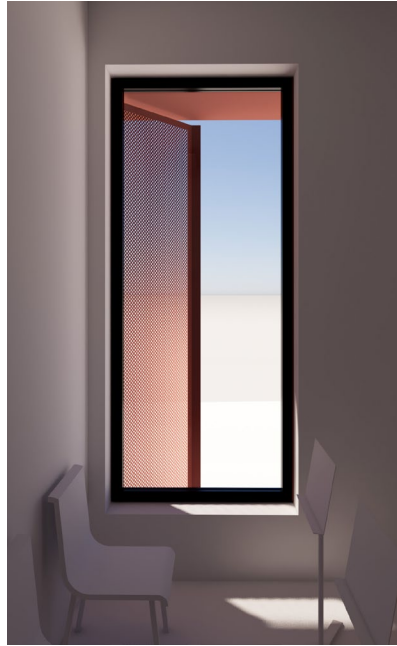
## Site plan

- The project site design will focus on providing accessibility to the new addition while allowing for the extensive pedestrian circulation that flows in and around this project site.
- The 2-story bar of offices and lobby along Newell Dr, activate the street with a more inviting building entry and a visual connection inside
- The larger volume of the concert hall sits back from the façade and aligns with the existing School of Music’s 3-story building



## Building Design

- Massing creates a strong architectural dialogue between the 2-story red masonry base and white upper volume of the concert hall, creating a stronger relationship with surrounding context.
- Red brick connects the project back to the material palette of the existing building, the campus and historic district.
- The white faceted concert hall volume draws inspiration from the existing School of Music’s angled form.
- Careful attention to scale and proportion gives a timeless and contemporary quality that integrates with the surrounding campus buildings.



## Sustainability

- The project will be pursuing Green Globes 3 Globe certification
- Goals
  - Prioritize indoor air quality to insure health of musician's respiratory system
  - Align with campus Climate Action Plan 2030
  - Prioritize durable, low maintenance solutions
  - Create comfortable outdoor gathering space





Motion to forward the project to the VP for Construction, Facilities and Real Estate with a recommendation to approve as presented.

---

**UF-672 NEW MUSIC BUILDING**