
3 April 2025

Construction Documents



UF-692 - 0723

Chemical Engineering Renovation & Remodeling

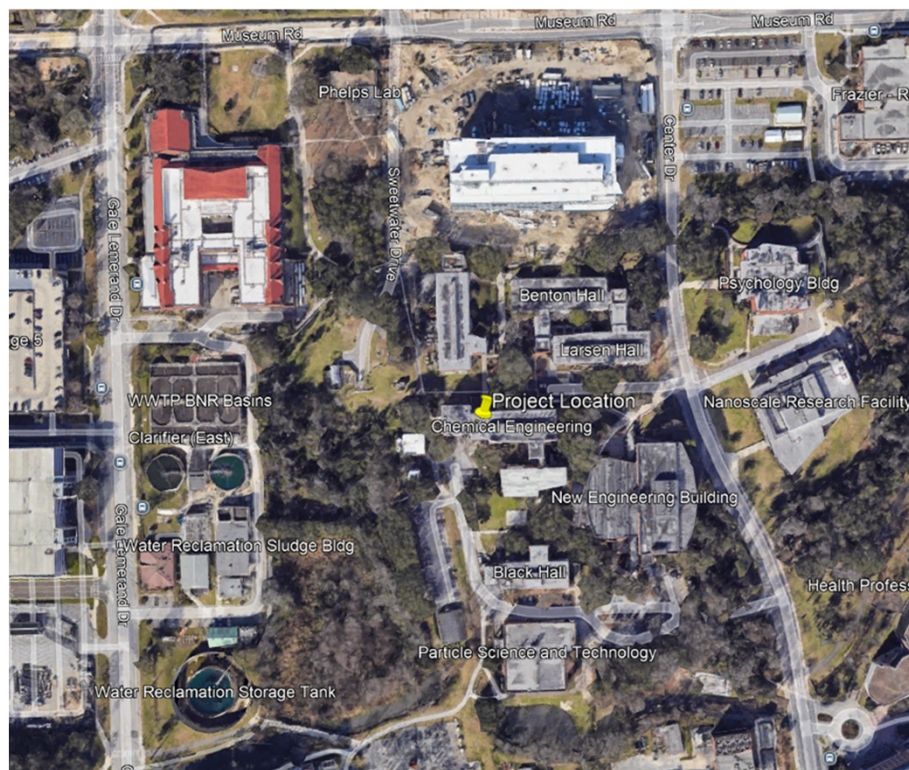
Stephen Caron



UF-692 – Chemical Engineering Renovation & Remodeling

Project Overview

- The project is located at building 0723 Chemical Engineering, 1006 Center Drive, Gainesville, Florida
- The scope of this project is to completely renovate all interior spaces of the ~54,000GSF building, and to add a 1,250 GSF entry lobby.
- The purpose of the project is to update the 60-year-old building with new labs, support spaces, restrooms, and MEPFP infrastructure.
- This project previously came to the LVL committee on 7 November 2024.





UF-692 – Chemical Engineering Renovation & Remodeling

Aerial View





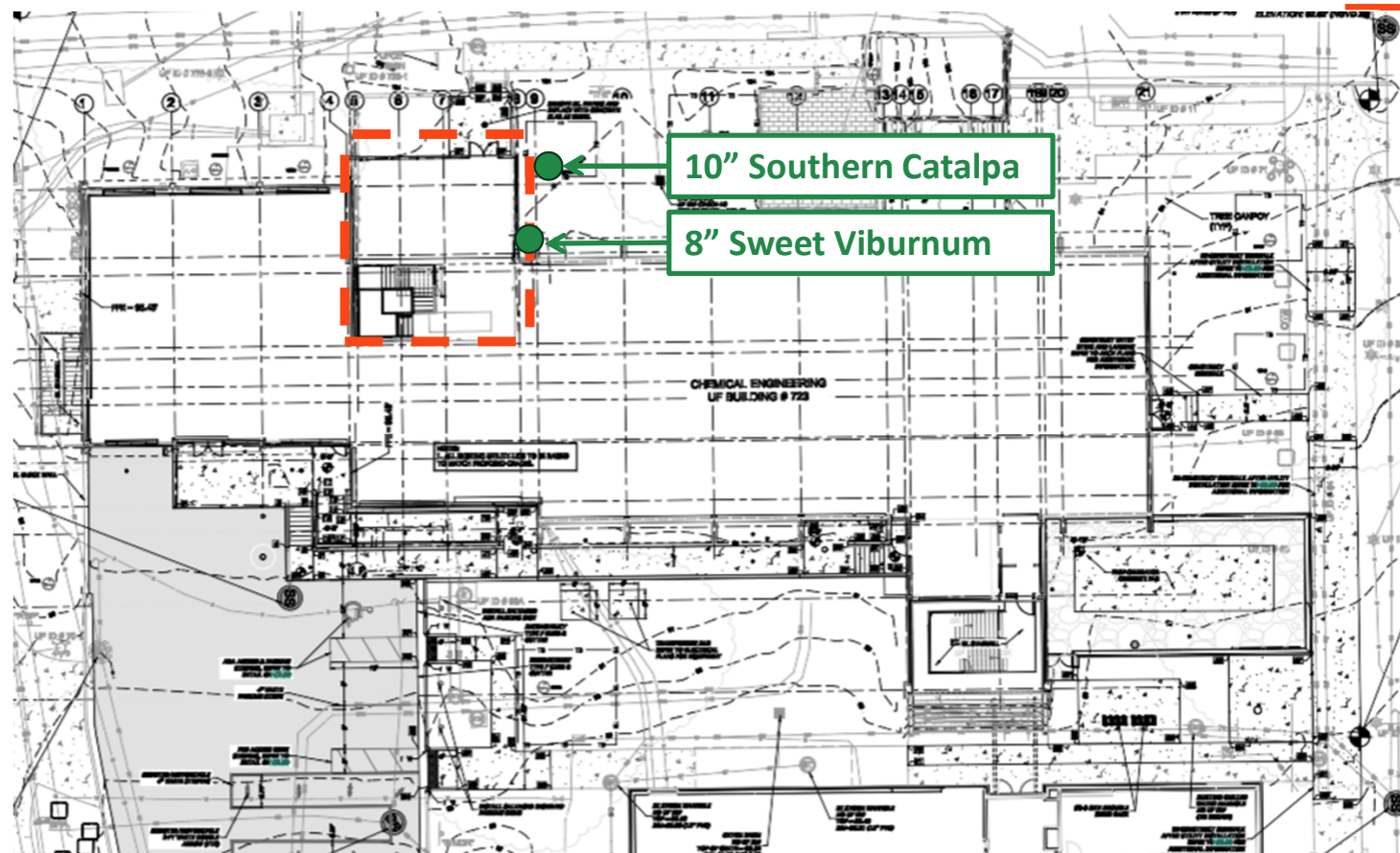
UF-692 – Chemical Engineering Renovation & Remodeling

Proposed North
Entry Addition
Existing Condition



Tree Impacts

- The project includes minimal tree impacts by the north addition to the building.
- Landscape Plans are underway, and mitigation will either be provided onsite or through a tree mitigation payment.





UF-692 – Chemical Engineering Renovation & Remodeling

Tree Impacts





UF-692 – Chemical Engineering Renovation & Remodeling

Tree Impact &

Mitigation Summary

- The project includes minimal tree impacts by the north addition to the building.
- Landscape Plans are underway, and mitigation will either be provided onsite or through a tree mitigation payment.

SPECIES	DBH	CONDITION
Southern Catalpa	10"	Fair
Sweet Viburnum	8"	Fair

NUMBER OF TREES REMOVED	2	NUMBER OF TREES PLANTED ON SITE	TBD
NUMBER OF HERITAGE TREES REMOVED	0	NUMBER OF REQUIRED MITIGATION TREES	4
<u>MITIGATION FEE</u>		\$1000	



UF-692 – Chemical Engineering Renovation & Remodeling

Landscape Plan

- The project is located in precinct 1 of the Landscape Master Plan
- Any proposed plantings will comply with the Landscape Master Plan and be coordinated with UF Grounds.



A motion to approve the project as presented.

**UF-692 – Chemical Engineering
Renovation & Remodeling**

April 3, 2025

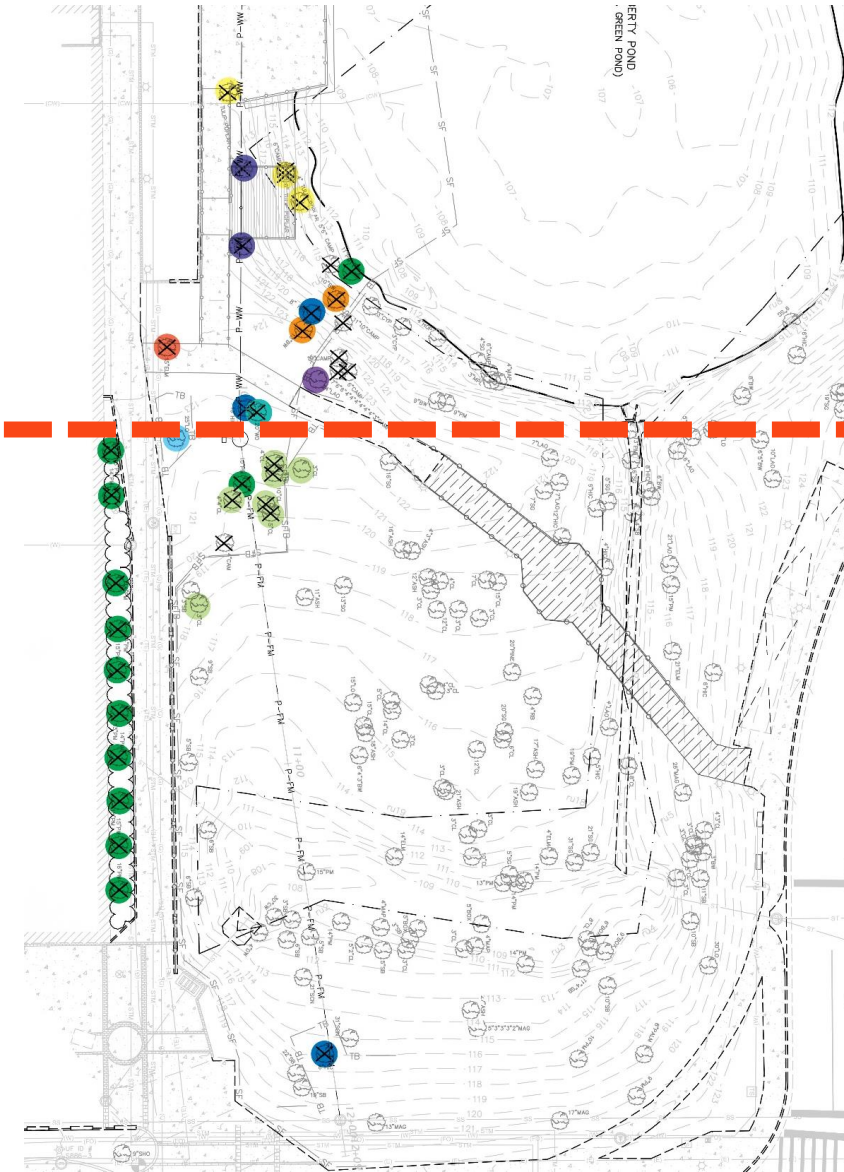


MP07468 - 686 Liberty Pond - Repair South Terrace Concrete and Seawall

Stephen Caron

Tree Impacts

- The project has been reviewed twice by the LVL Committee with required 36 tree removals and mitigation approved by the committee.
- A special meeting was held on site to review the plants, species, and replanting in this conservation area. During this meeting members of the design team and the UF PM met with Planning, Reitz Union, Office of Sustainability, and other UF stakeholders to review.
- Tree removals are required to access the construction site, repair of the existing seawall, construction of a new boardwalk/overlook, and a new sanitary sewer and lift station.



Sheet 1

Sheet 2

Tree Impacts

- During construction, it was determined that a 25" Live Oak needs to be removed to allow access for construction activities. The tree was reviewed onsite by Tom Schlick with the CM. Mitigation for this tree is included in the updated mitigation calculations for the project below.
- During review for this presentation, it was also noted that the previous approval misidentified a 20" Swamp Chestnut Oak onsite in the mitigation calculations. Calculations below are updated to include the correct mitigation requirements.

PREVIOUSLY APPROVED MITIGATION REQUIRED

46 TREES

TOTAL PROPOSED MITIGATION TREES

18 TREES

PREVIOUS MITIGATION DEFICIT

28 TREES OR
\$7,000 (\$250 PER
REPLACEMENT TREE)

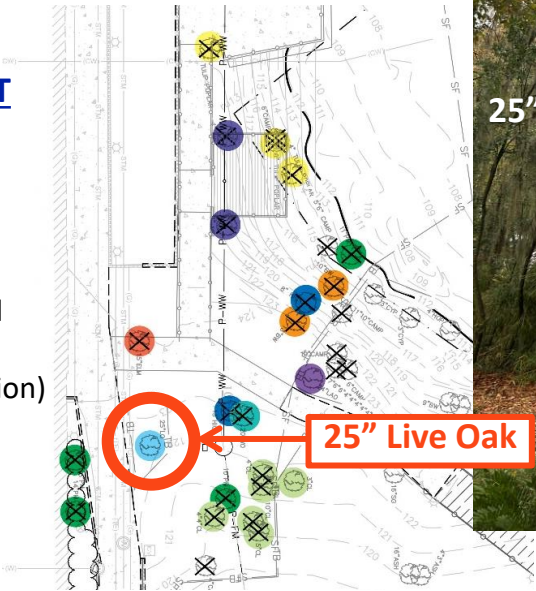
ADDED MITIGATION (4/25)*

\$2000

TOTAL MITIGATION PAYMENT REQUIRED

\$9,000 (\$250 PER
REPLACEMENT TREE)

*\$1500 for 25" live oak, additional
\$500 for swamp chestnut oak
(previously shown at \$500 mitigation)





A motion to approve the project as presented.

**MP06572 Reitz Union Liberty Pond
Boardwalk Social Space**

UF-644 Existing 12" Holly Tree South of Vault 79

There is an existing 12" Holly Tree on the south side of the south retaining wall at the Marston Library Service Drive. A portion of this existing retaining wall is to be removed and replaced. Due to the close proximity of the Holly tree to the retaining wall, there are concerns regarding the survivability of the existing tree during the wall replacement.

In speaking with the concrete installer, they are aware of the tree's location and the concerns surrounding the tree's health during the concrete installation. During the installation operation, care and attention will be focused on the tree to ensure minimum impact is made.

After the installation is complete, the tree's health will be monitored to ensure/confirm its survivability after the fact. If in the case the tree is impacted from the work operation, the tree will be removed and replaced with an approved alternative.



Figure 1- Existing Holly Tree South of Retaining Wall





*April 3, 2025
Facilities Services*



Landscaping and Natural Resource Projects

Maintaining the aesthetics and functions of our natural areas

Recent Work

Palm Removals - February

Species	Location	Date	Removal Reason
Phoenix Palm	Library West	2/2/25	Dead
Washington Palm	Florida Museum	2/4/25	Dead
Cabbage Palm	Graham Pool	2/4/25	Dead
Cabbage Palm	Weaver Hall	2/4/25	Dead
Phoenix Palm	Dizney Stadium	2/4/25	Dead
Cabbage Palm	Rhines Hall	2/4/25	Dead
Phoenix Palm	Dizney Stadium	2/4/25	Dead
Cabbage Palm	Weimer Hall	2/7/25	Dead
Cabbage Palm	Weimer Hall	2/7/25	Hazardous
Cabbage Palm	Lakeside Complex	2/14/25	Diseased

Recent Work

Palm Removals - February

Species	Location	Date	Removal Reason
Cabbage Palm	Lakeside Complex	2/14/25	Dead
Cabbage Palm	Lakeside Complex	2/14/25	Dead
Cabbage Palm	South of Music Building	2/18/25	Diseased
Cabbage Palm	Gerson Hall	2/20/25	Dead
Cabbage Palm	Norman Pool	2/25/25	Dead
Cabbage Palm	Harn Museum	2/26/25	Diseased
Cabbage Palm	Housing	2/26/25	Dead
Cabbage Palm	Alfred Ring Tennis Complex	2/26/25	Dead
Washington Palm	Alfred Ring Tennis Complex	2/27/25	Dead
Fan Palm	Ficke Gardens	2/28/25	Dead

Recent Work

Other Tree Removals - February

Species	Location	Date	Removal Reason
Sweet Gum	Sheppard Broad	2/15/25	Hazardous
Laurel Oak	Sheppard Broad	2/15/25	Hazardous
Laurel Oak	Sheppard Broad	2/15/25	Dead
Laurel Oak	Radio Road & 34th	2/20/25	Hazardous
Laurel Oak	Radio Road & 34th	2/20/25	Hazardous
Laurel Oak	Radio Road & 34th	2/20/25	Hazardous
Camphor Tree	Wilmot Gardens	2/22/25	Hazardous

Plantings

- Landscape and Natural Resources plants trees and shrubs almost every month of the year.
- Recent examples of this work include the displayed pine plantings.



Conservation Area Fencing

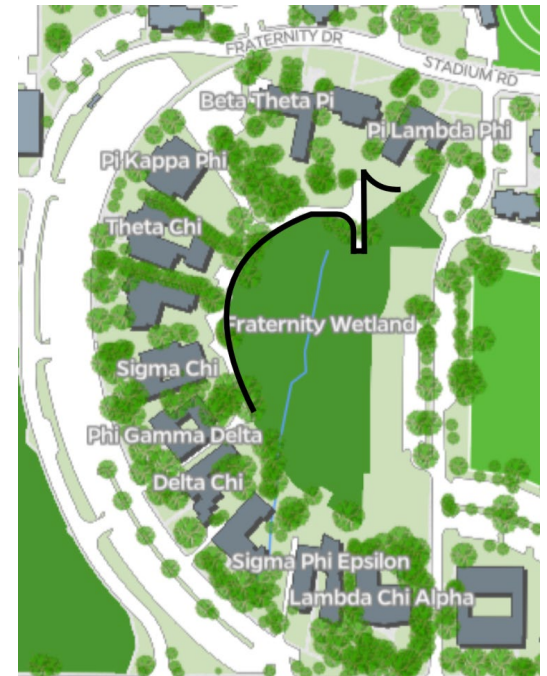
Alpha Gamma Rho

- 6' chain-link encased in black vinyl with one pedestrian opening on the west side to access Lake Alice Field.



Fraternity Row

- 6' galvanized chain link with one maintenance gate.
- There will be some vegetation impact (primarily underbrush) to clear a work corridor and remove garbage from the area.



Current Work

- Uplimbing in progress at the Cultural Plaza. Extensive trimming is being completed to provide for construction needs and parking access.

Planned Work

- Magnolia at University Auditorium to be removed due to crowding out a heritage live oak and proximity to the sidewalk.
- Removal of two declining Shumard Oaks on Buckman Drive to take place early summer. These trees have outgrown their planters and are creating a hazardous condition.



Project Feasibility Analysis

- Options are under review for repair of damaged boardwalk at Digital Design Wetlands.

